

CANCER
IN
WYOMING

WYOMING CANCER COALITION MEETING – MARCH 1, 2022

Joseph Grandpre, PhD, MPH
Wyoming Department of Health

Leading Causes of Death in WY

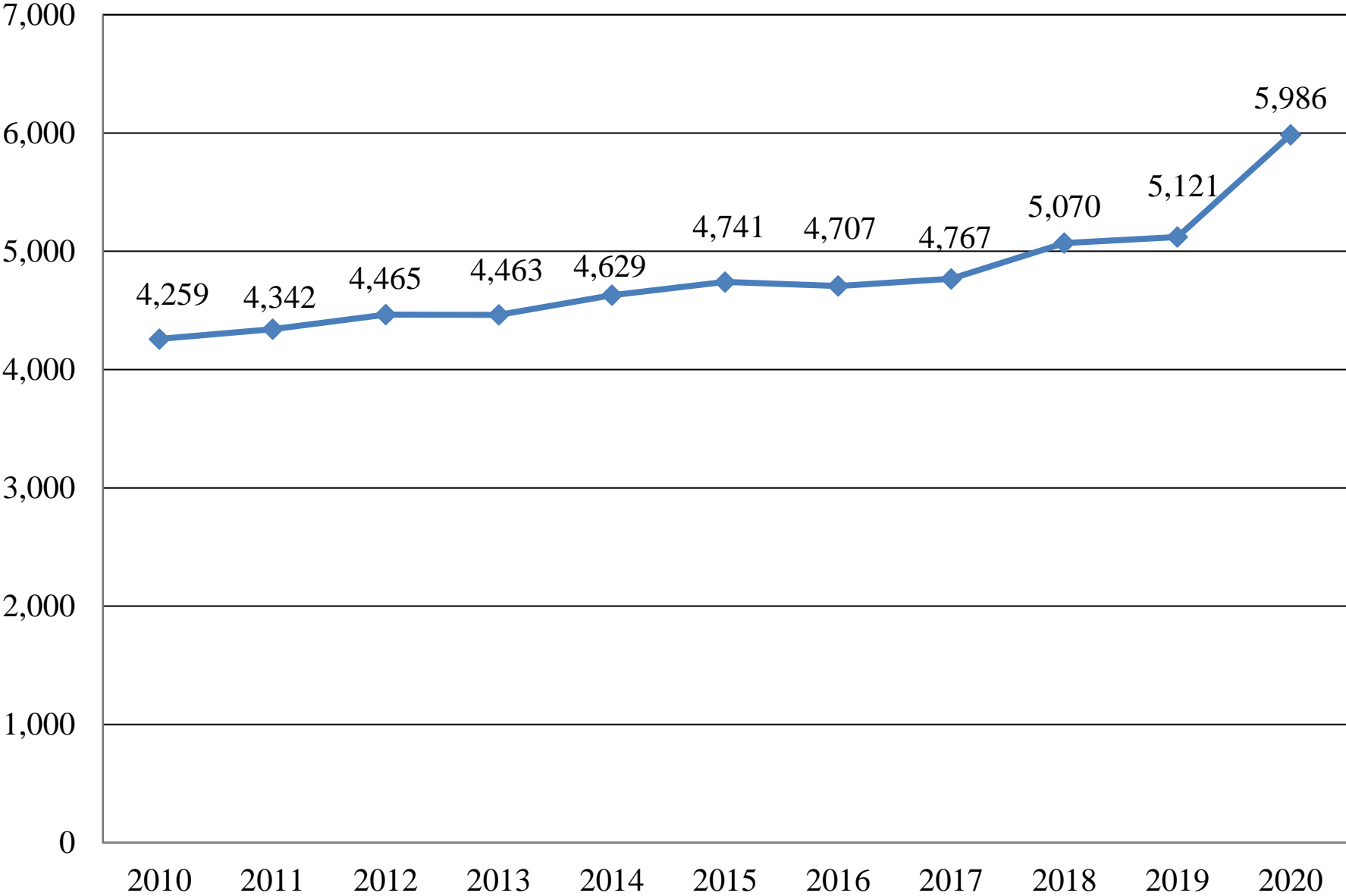
	<u>2019</u>	<u>2020</u>
Heart Disease	1,066	1,173
Cancer	1,015	1,031
COVID-19	-----	463
Chronic Resp.	381	401
Accidents/Adverse	384	375
Alzheimer's	238	227
Stroke	221	220
Suicide	170	182
Diabetes	132	148
Chronic Disease	60%	53.4%



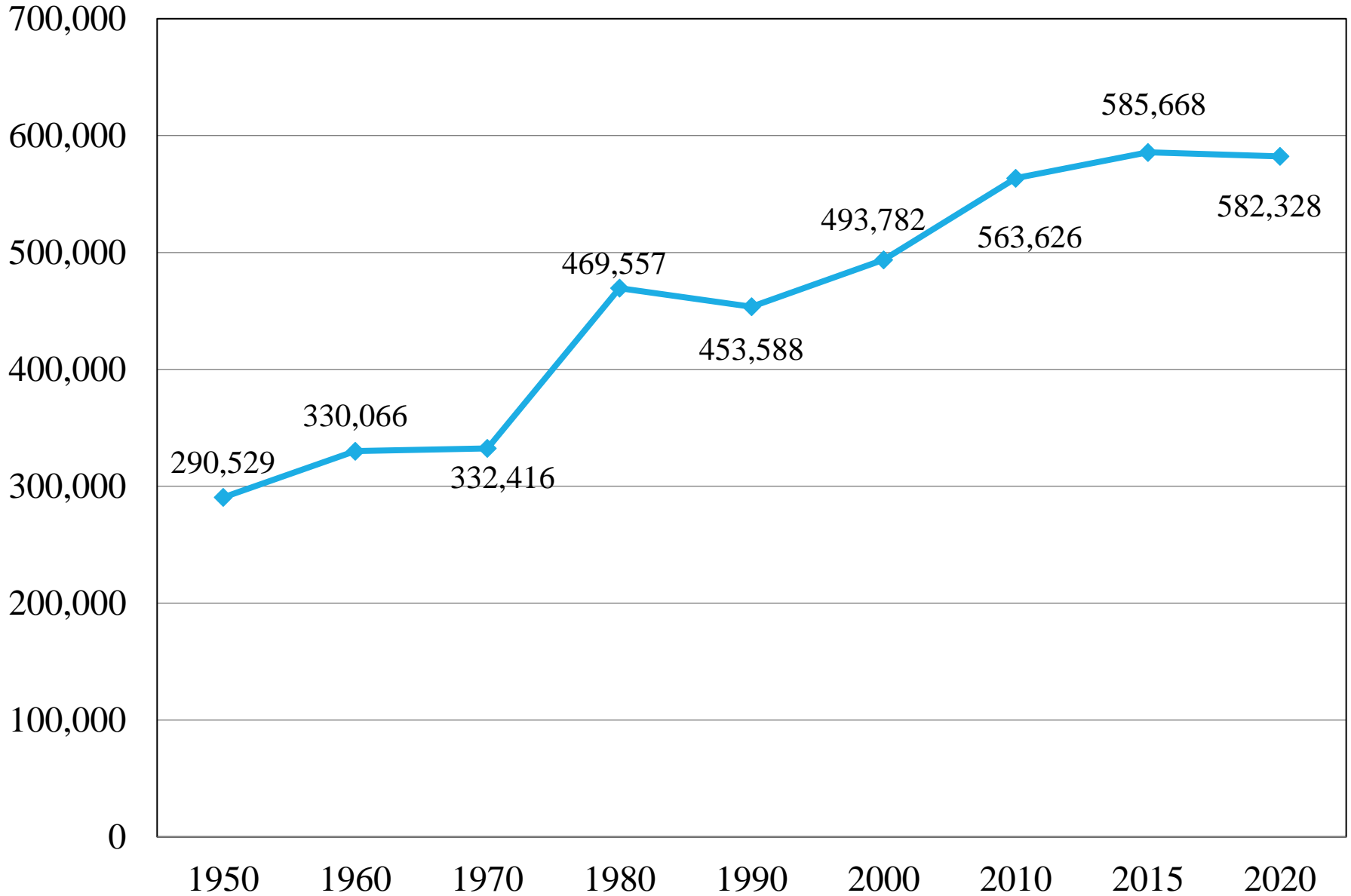
COVID 19?

**I USED TO SMOKE
THAT IN THE '70'S**

TOTAL DEATHS - ALL CAUSES



WYOMING TOTAL POPULATION



WY 2019 Cancer Incidence:

Prostate = 449

Breast = 421 (*418 Female, 3 Male*)

Lung = 330

Colorectal = 262

Melanoma = 186

TOTAL = 2,849

Typo on page 32 of 2019 Cancer Report states only 2,790 cases

WY 2019 Cancer Mortality:

Lung = 225

Colorectal = 89

Pancreas = 82

ILL-Defined = 82

Breast = 63

Prostate = 57

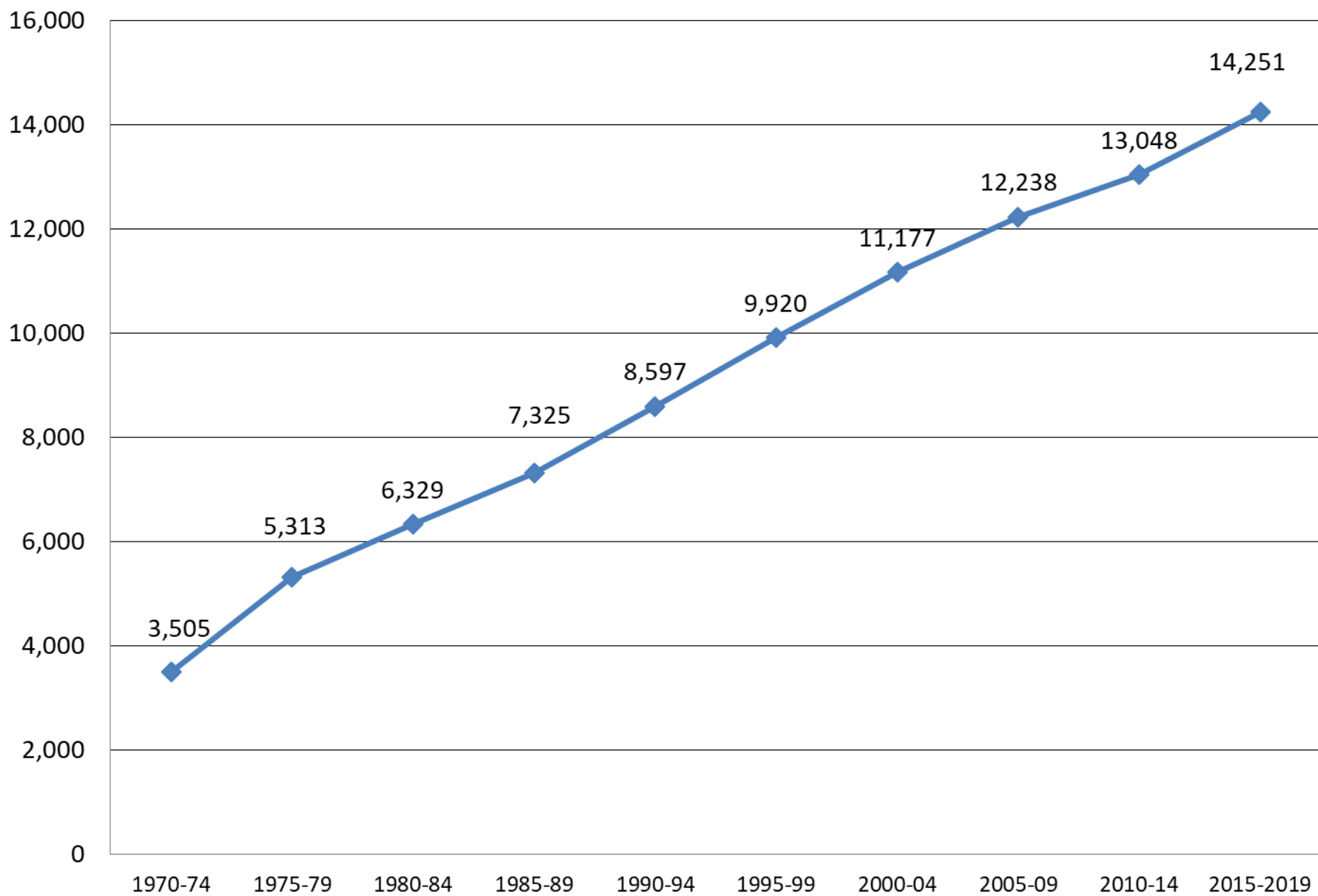
TOTAL = 1,015

HOLY CRAP

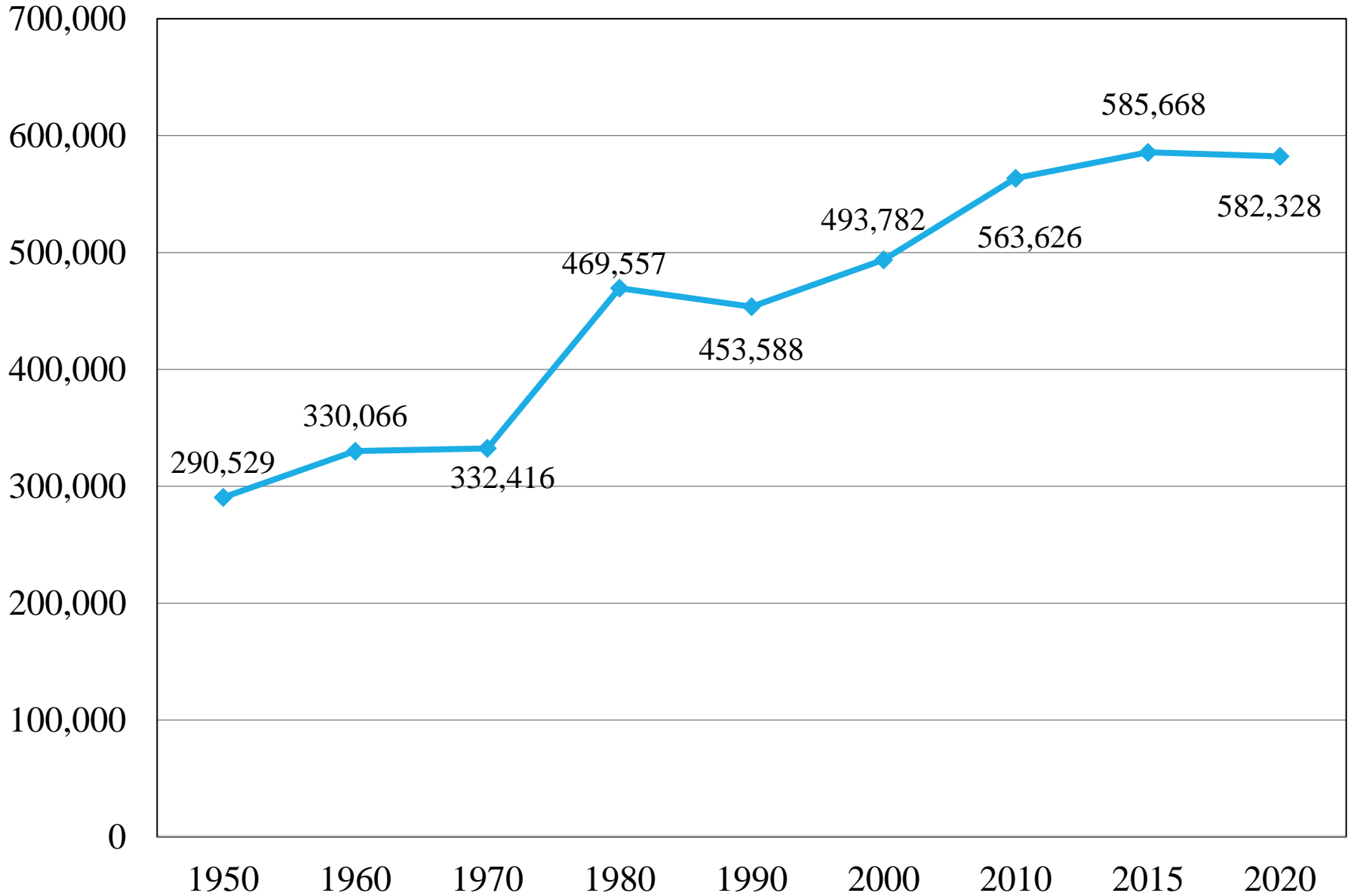


I'VE BEEN CLONED!

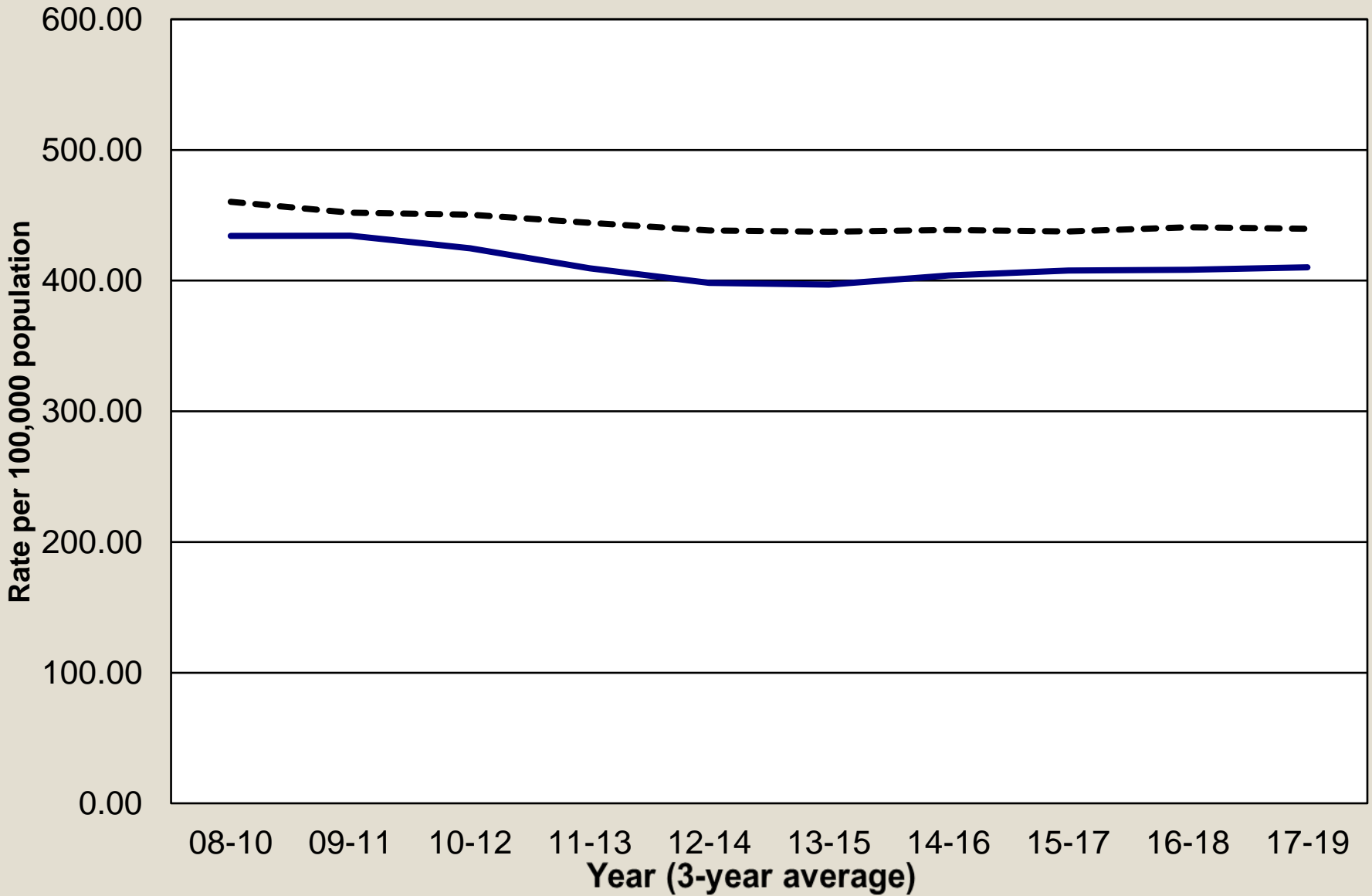
INCIDENCE - ALL CANCER SITES - 5 YEAR GROUPS



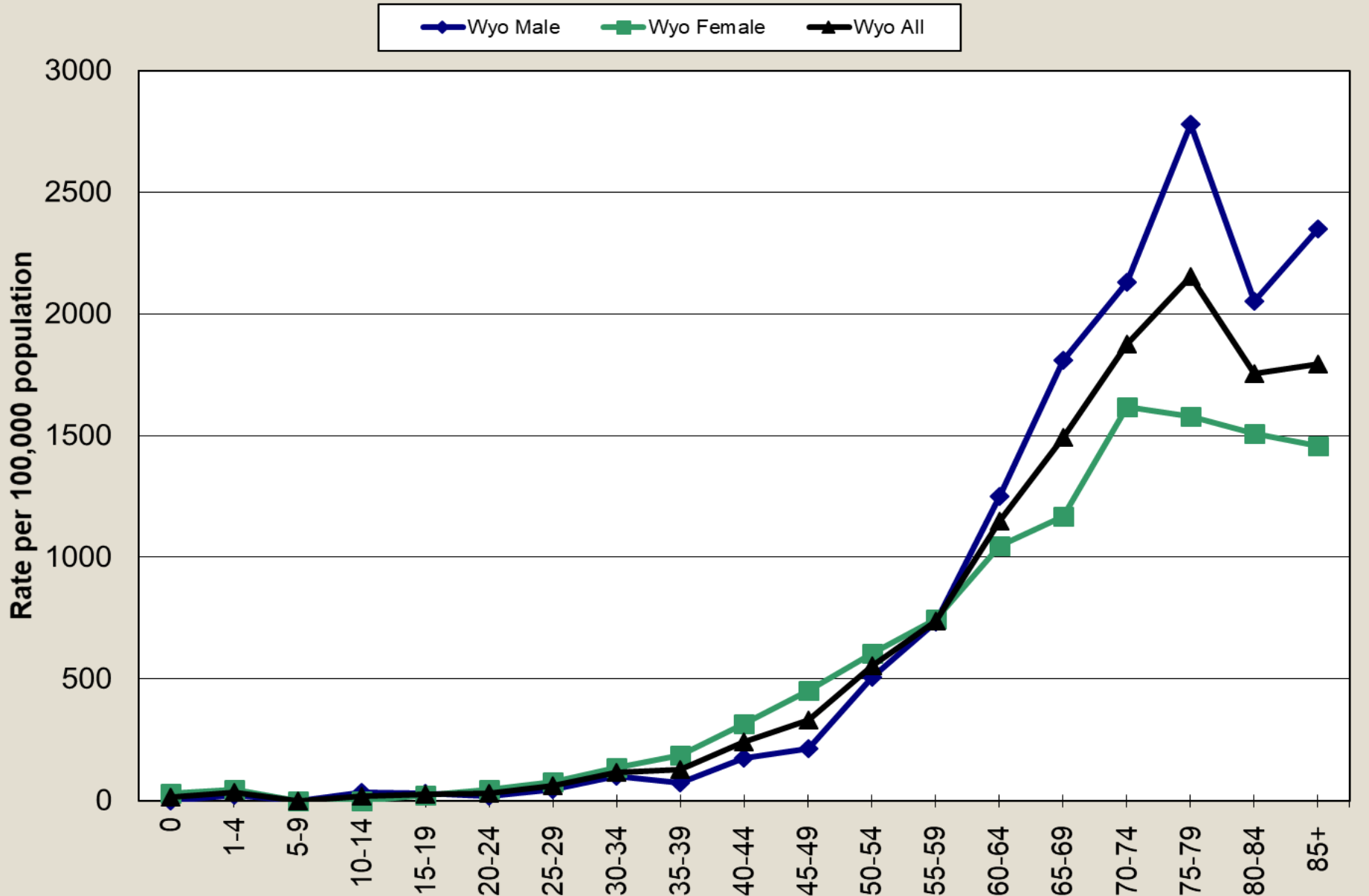
WYOMING TOTAL POPULATION



ALL SITES



ALL SITES

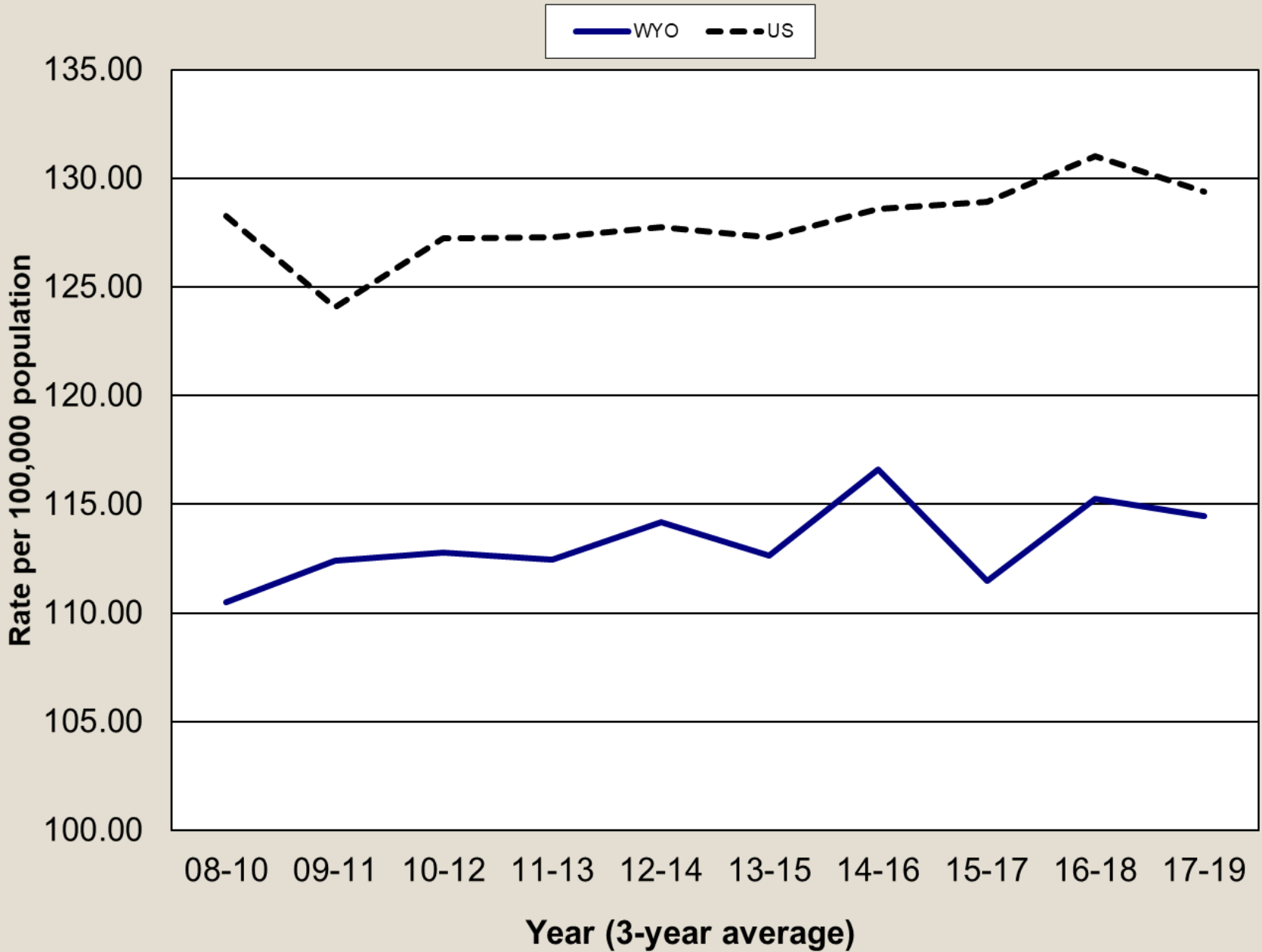


© Randy Glasbergen
glasbergen.com

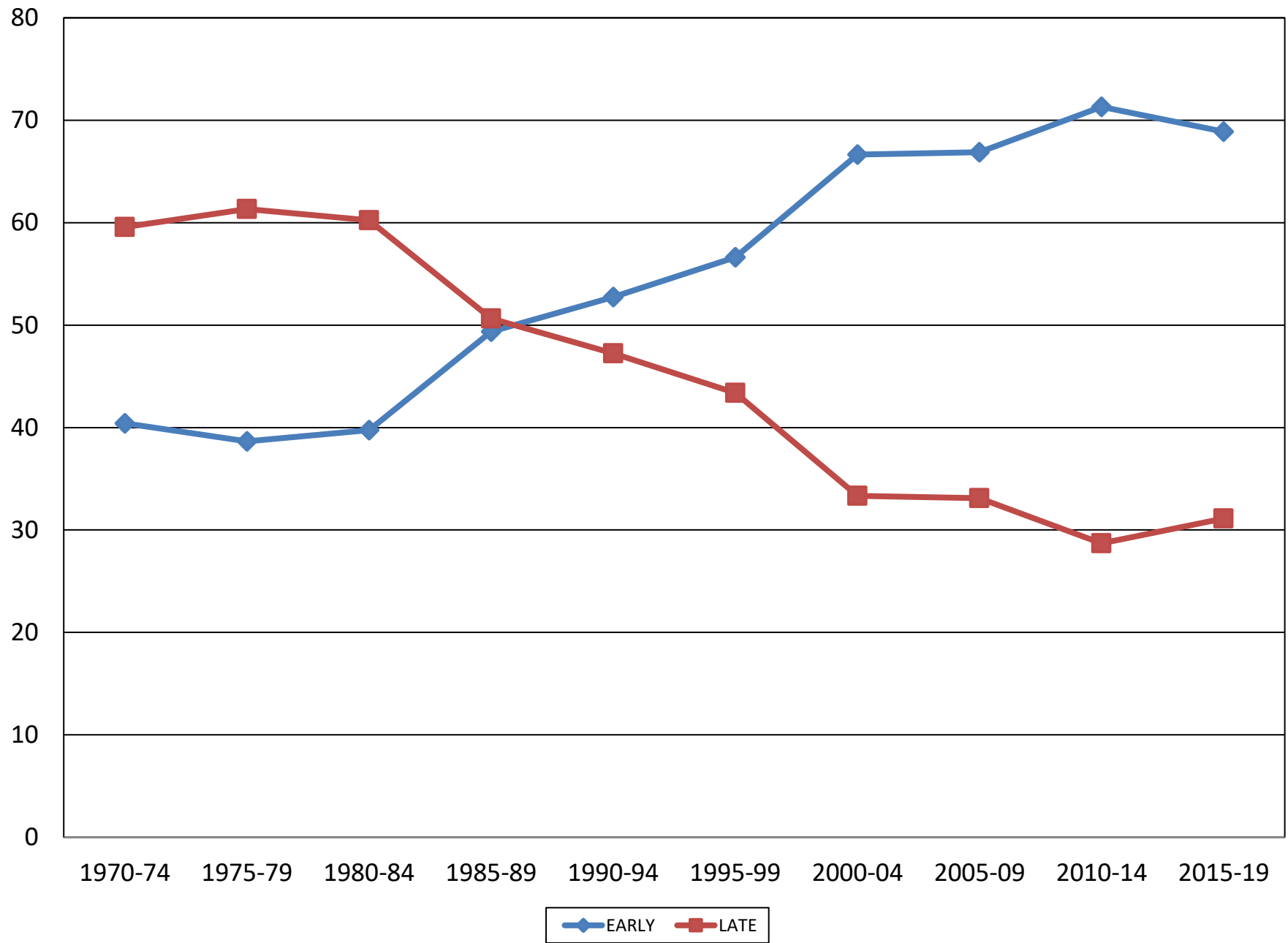


“We can get a discount on our health insurance if we list Google as our primary care physician.”

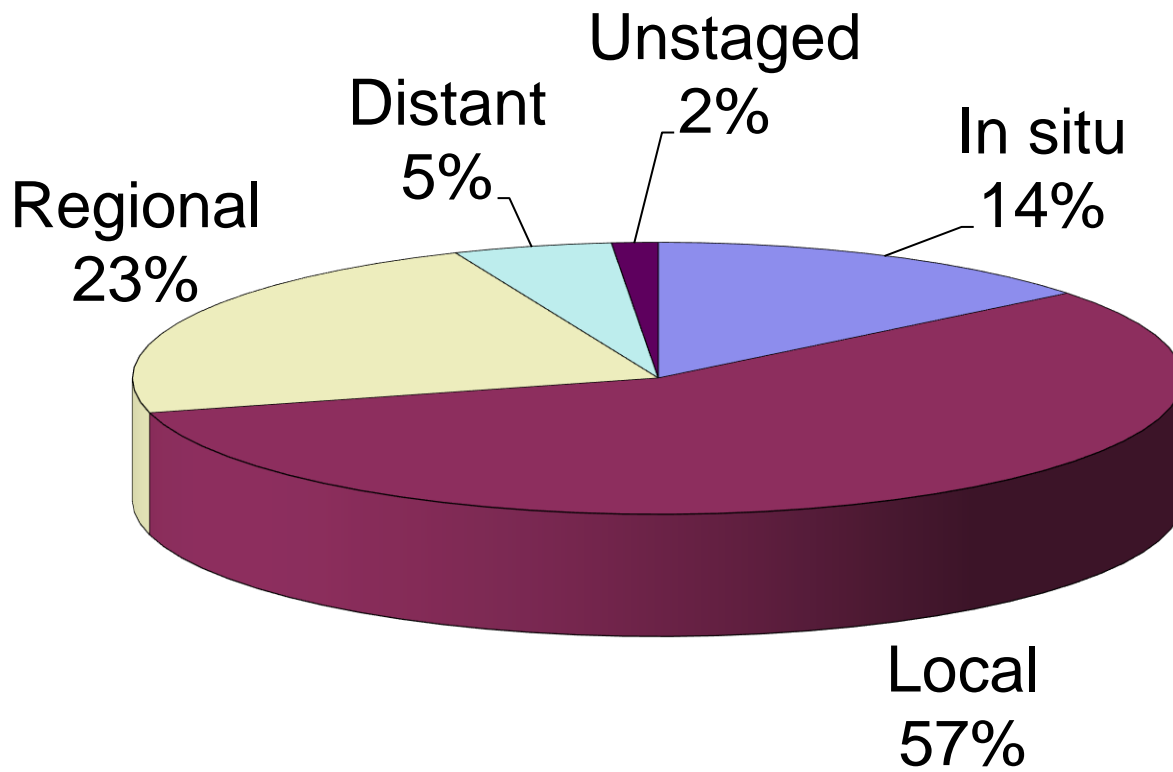
FEMALE BREAST



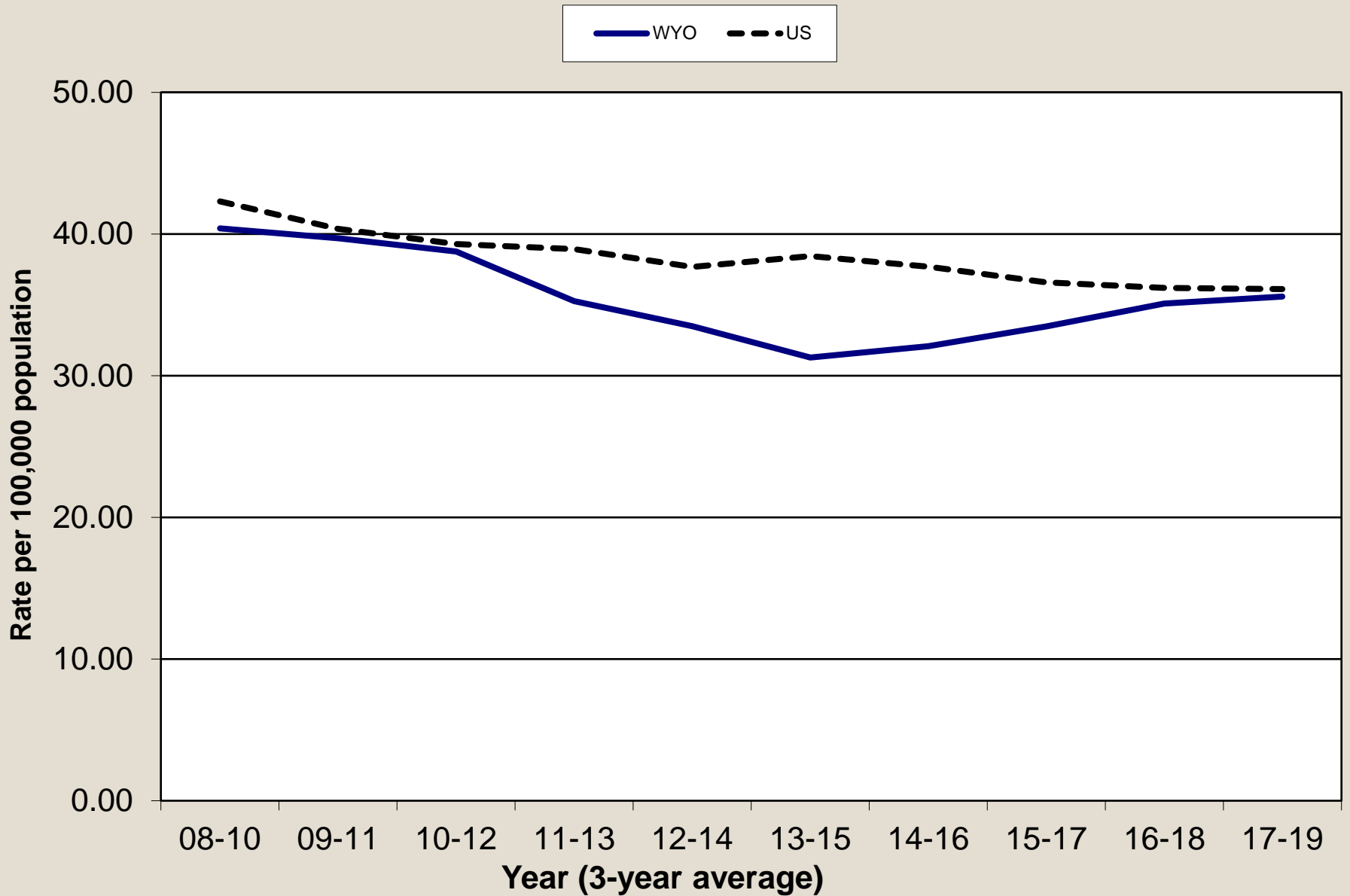
FEMALE BREAST CANCER



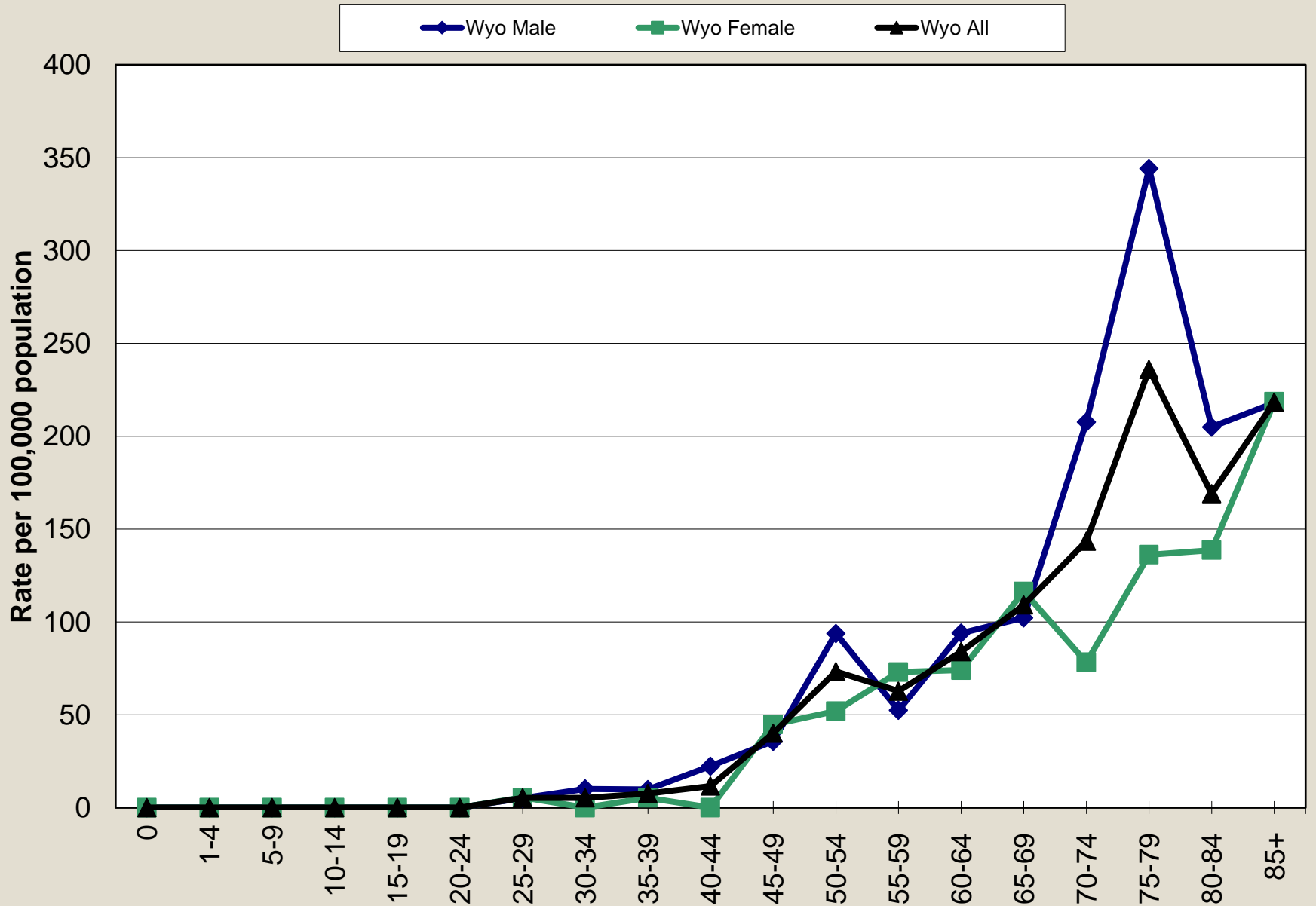
FEMALE BREAST



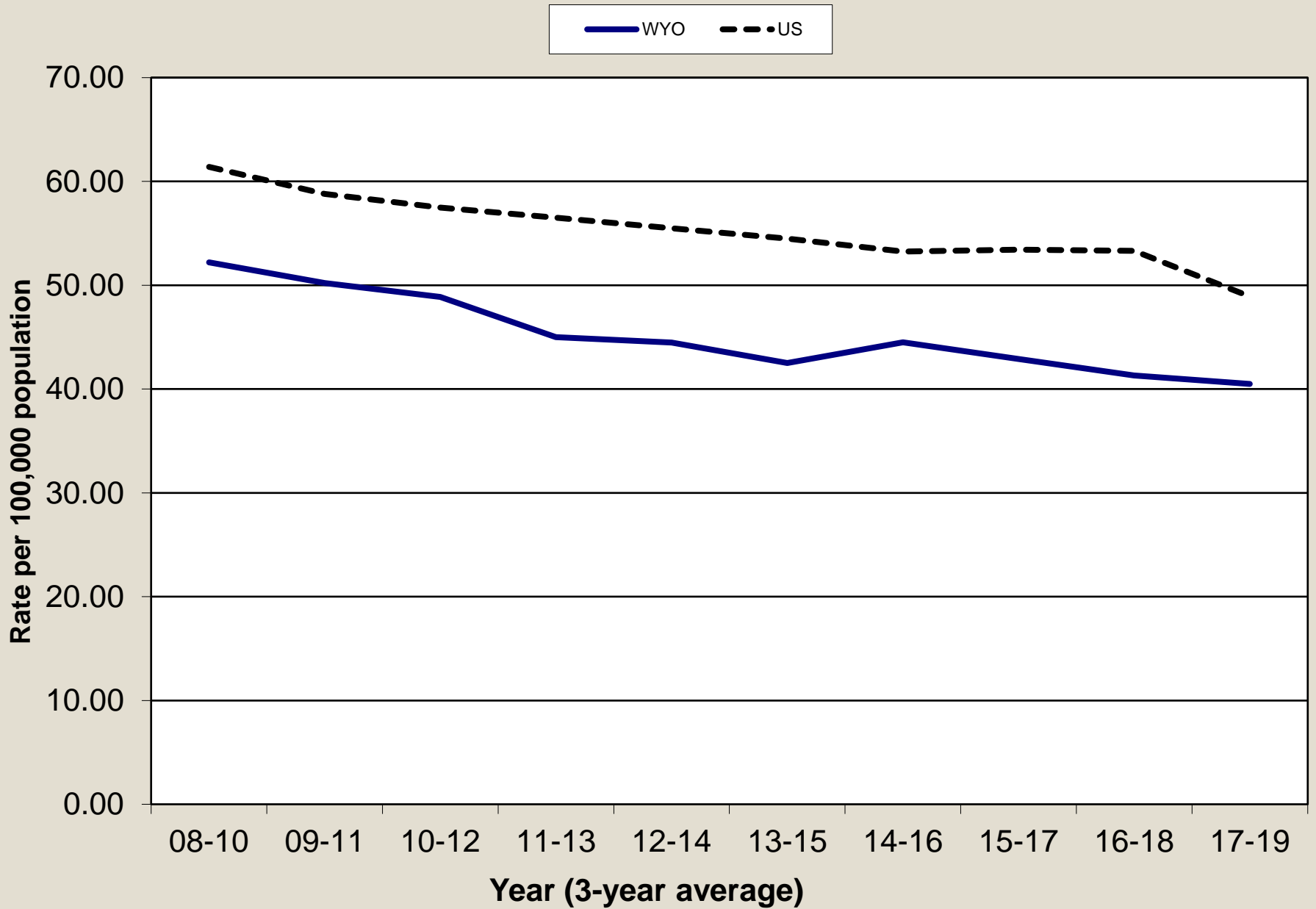
COLORECTAL



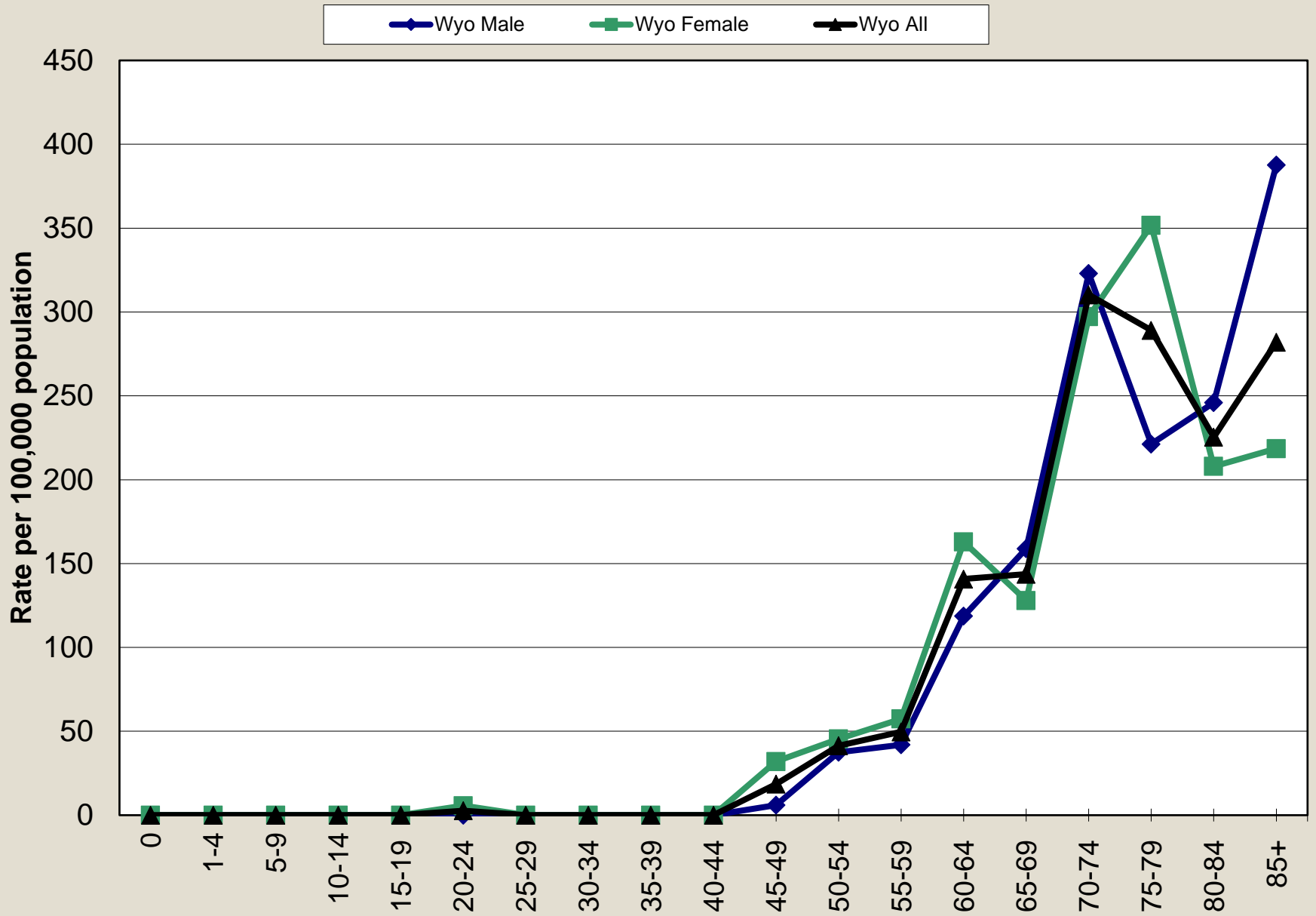
COLORECTAL



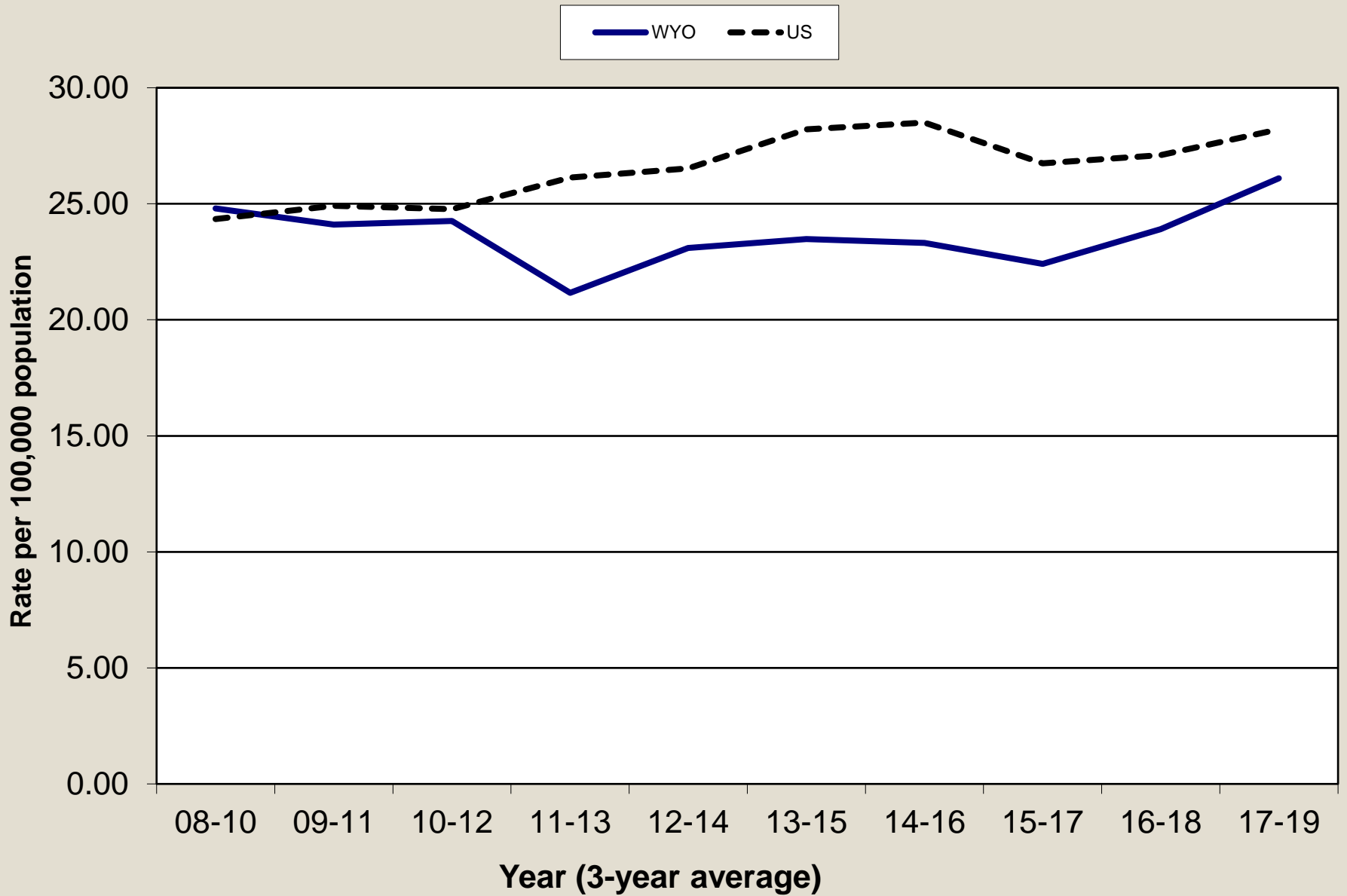
LUNG



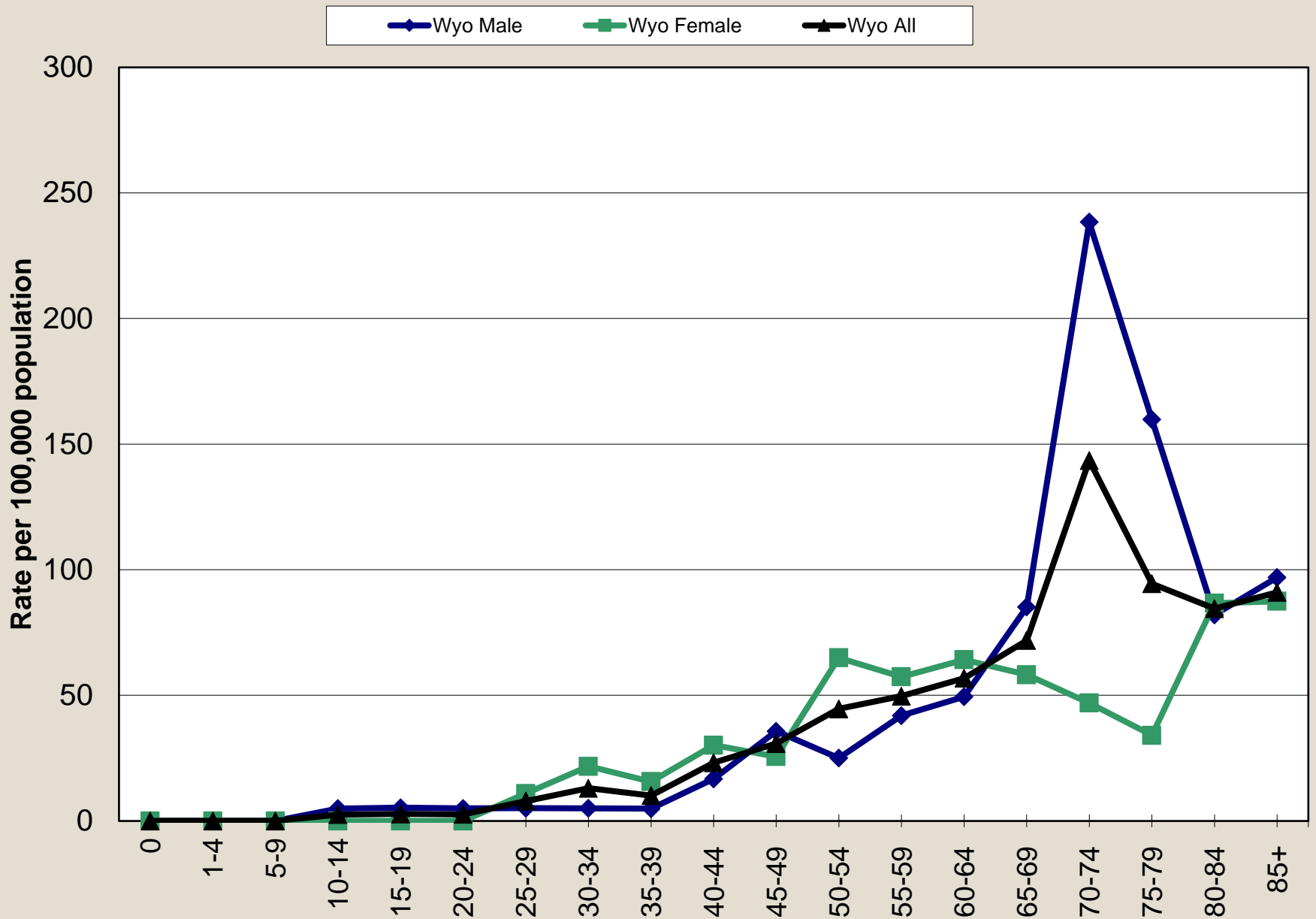
LUNG



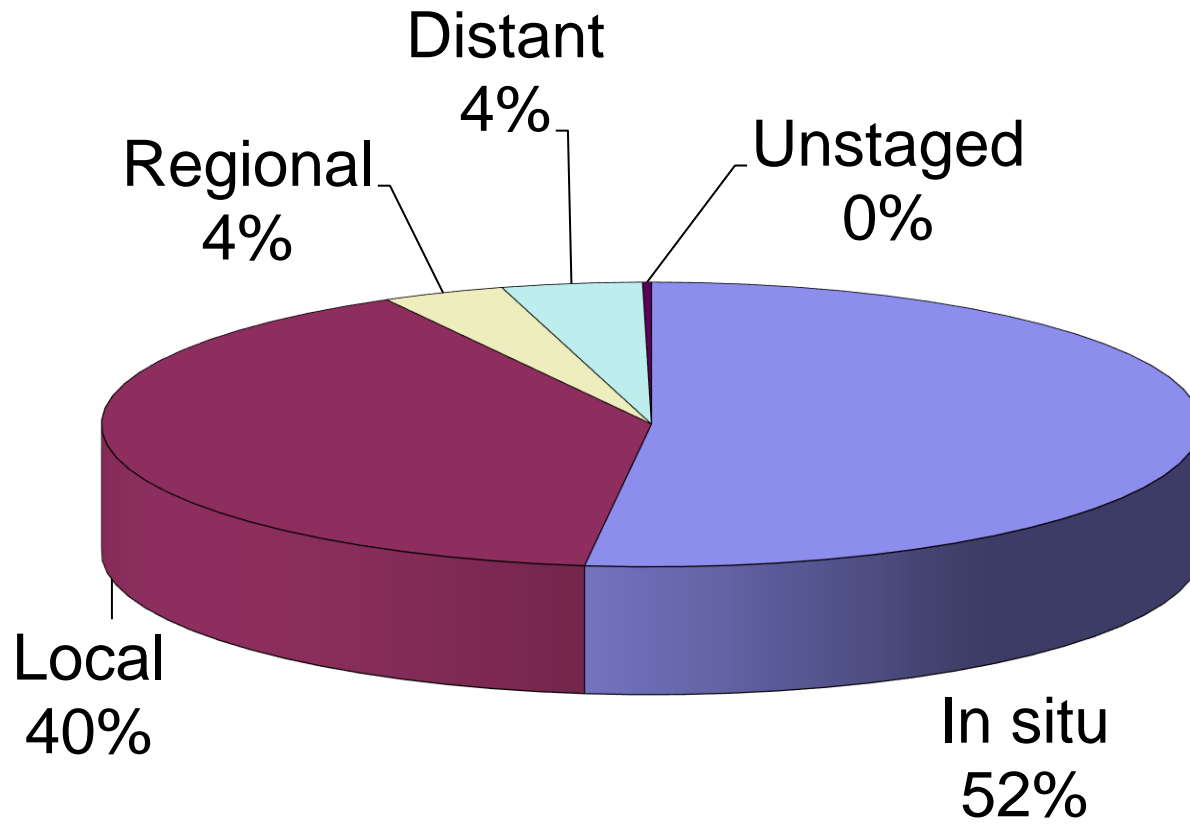
MELANOMA



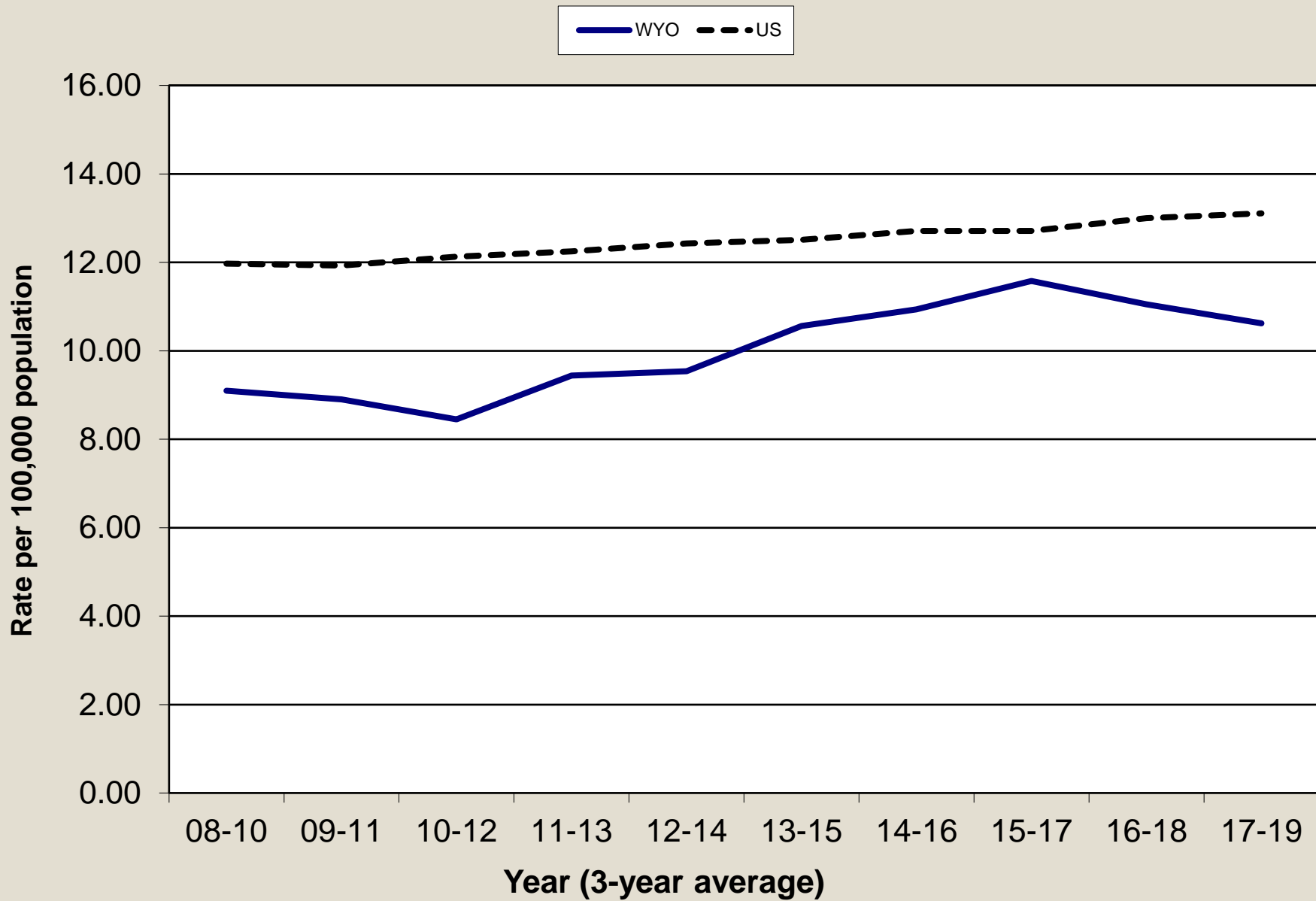
MELANOMA



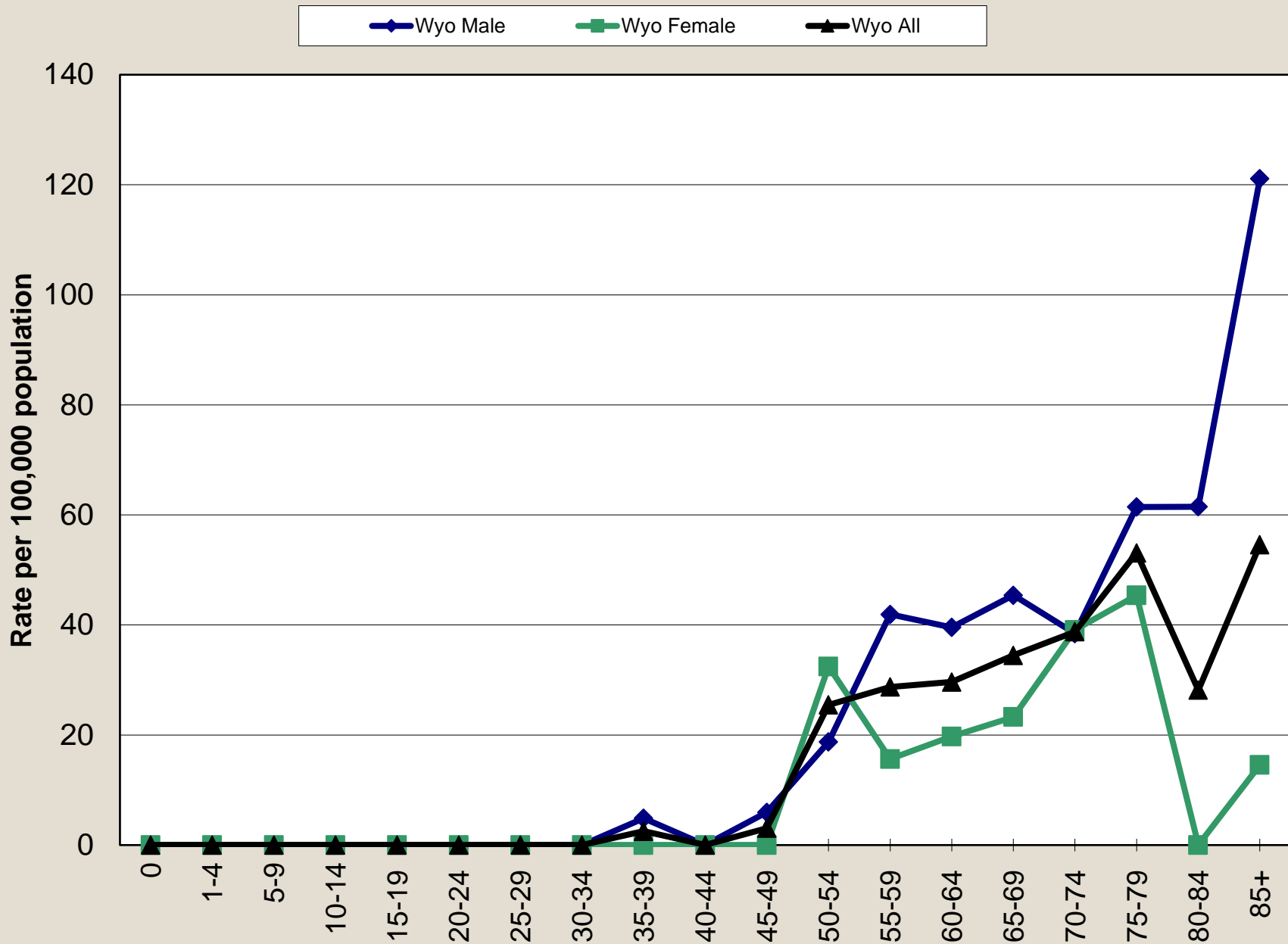
MELANOMA



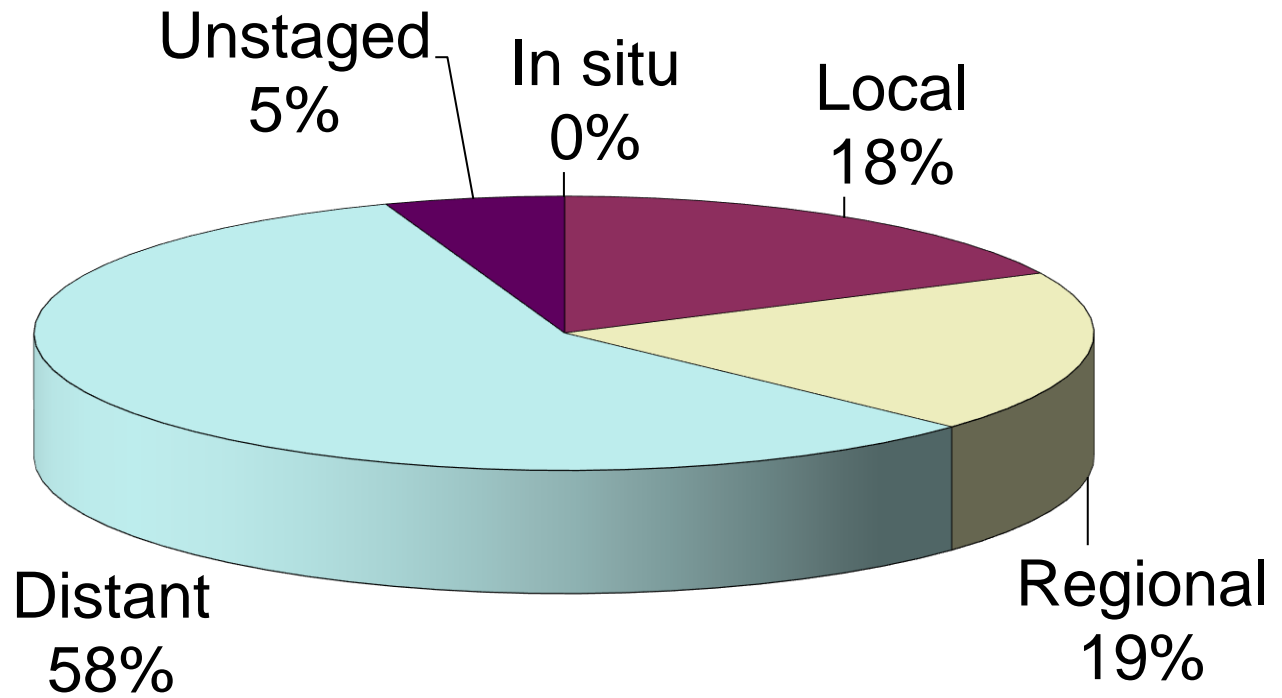
PANCREAS



PANCREAS



PANCREAS

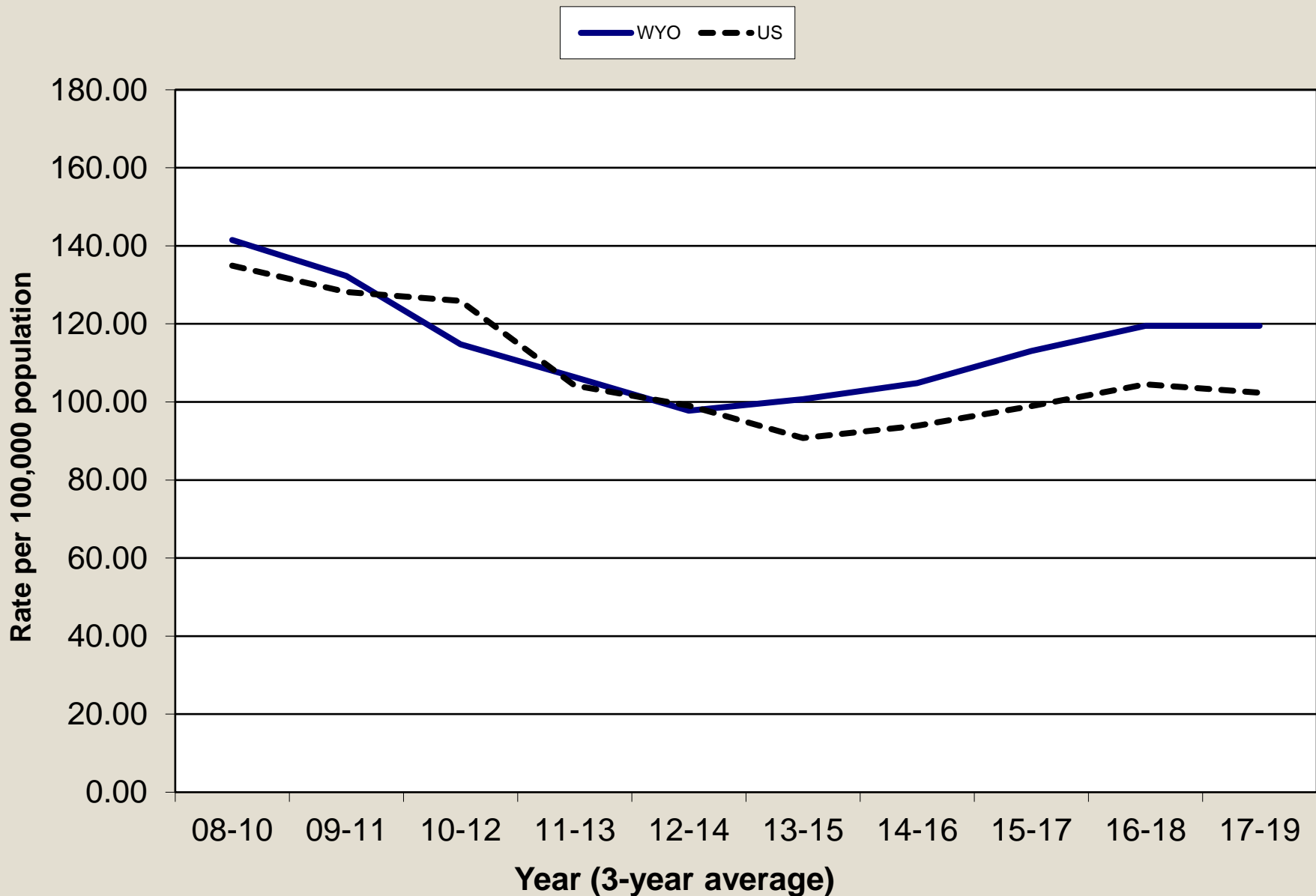


CAN YOU GIVE ME ONE REASON WHY HEALTH INSURANCE IS SO HIGH?



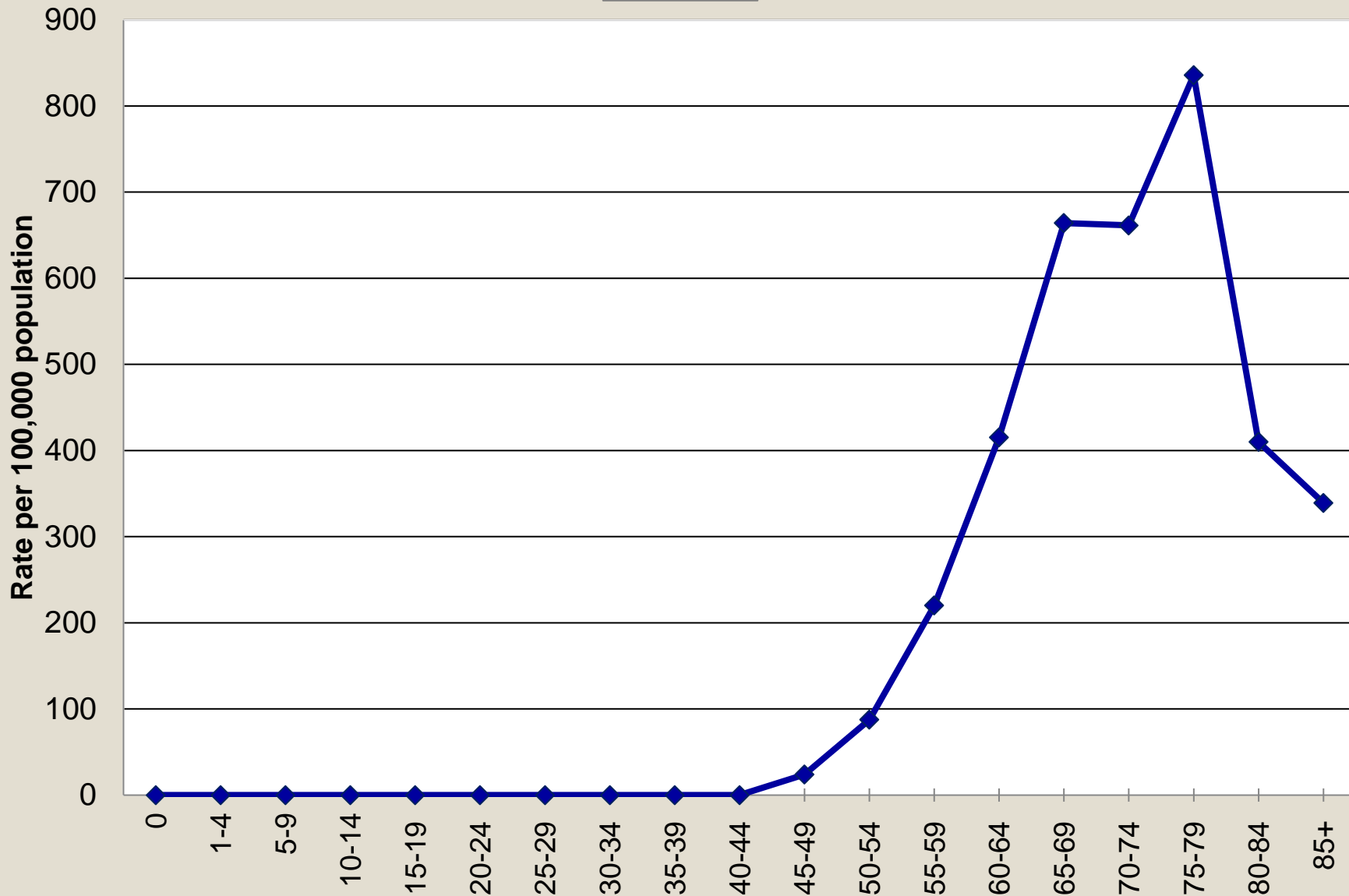
Michael Sauter
INDIANA POLICE STAR
2006 CREATORS SAND.

PROSTATE

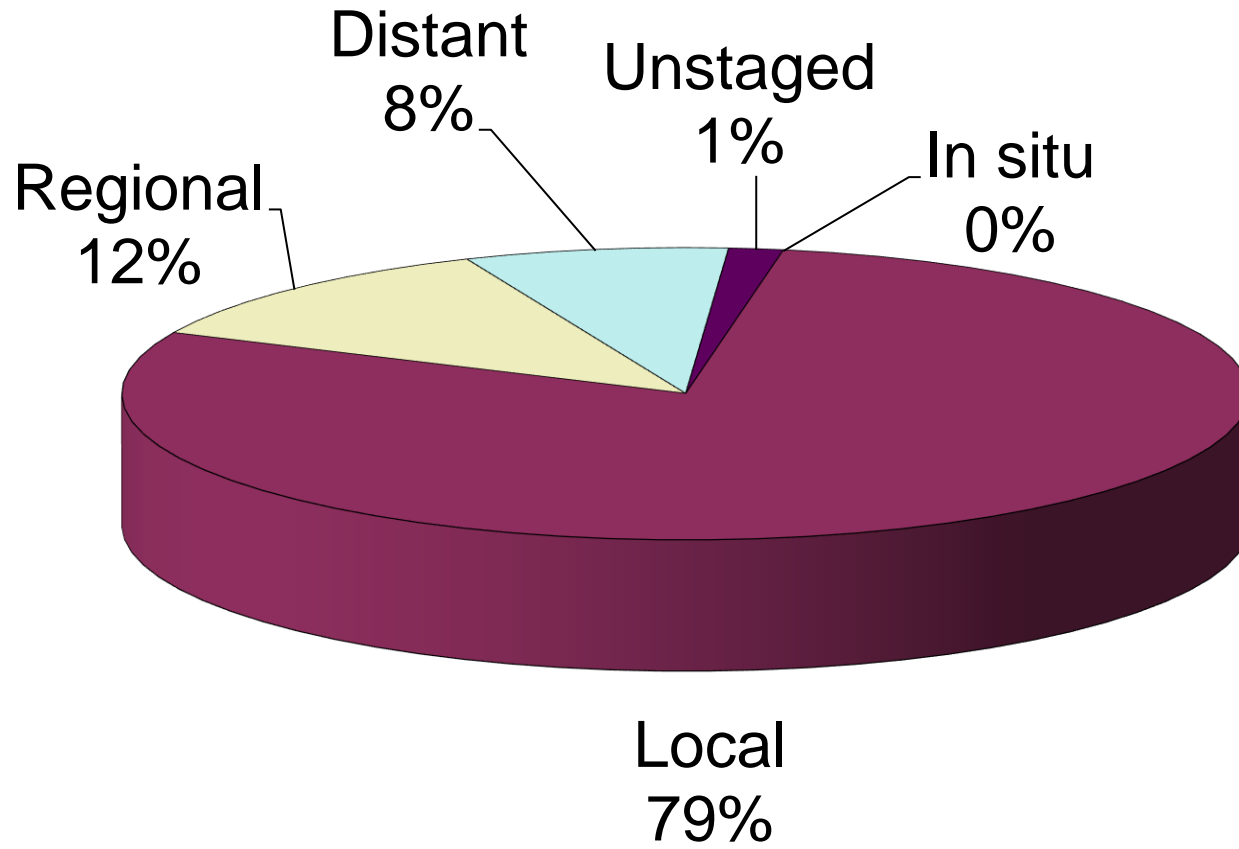


PROSTATE

Wyo Male



PROSTATE



Relative Survival by Cancer Type: 2010-2019 (All Ages Combined)

Cancer Site	12 Months	24 Months	36 Months	48 Months	60 Months
All Sites	84.70%	80.10%	77.50%	75.70%	74.70%
Bladder w/ In situ	92.70%	87.40%	85.30%	84.60%	84.50%
Brain/CNS	57.10%	44.00%	38.40%	33.80%	32.80%
Breast (Female)	98.40%	97.60%	96.00%	95.20%	94.50%
Colorectal	84.90%	77.60%	74.00%	69.40%	66.20%
Kidney	90.20%	86.90%	85.30%	82.40%	80.90%
Leukemia	80.10%	74.50%	71.50%	68.90%	67.10%
Lung	49.30%	36.10%	30.40%	26.80%	24.40%
Melanoma	99.20%	98.50%	98.50%	98.20%	98.00%
Non-Hodgkin	85.60%	81.60%	79.00%	77.20%	75.90%
Oral Cavity	90.70%	83.90%	78.60%	75.60%	74.20%
Ovary	82.40%	72.20%	66.00%	59.90%	53.60%
Pancreas	33.60%	21.70%	17.00%	15.60%	15.30%
Prostate	99.60%	99.60%	99.20%	99.00%	99.00%
Thyroid	98.80%	98.70%	98.30%	98.30%	98.30%
Uterine	95.50%	91.90%	89.50%	88.10%	87.40%

Relative Survival by Cancer Type: 2010-2019 All Stages (Ages 0-19 years old)

Cancer Site	12 Months	24 Months	36 Months	48 Months	60 Months
All Sites	96.60%	94.60%	94.20%	92.60%	91.40%
Bones & Joints	100.0%	100.0%	100.0%	89.00%	89.00%
Brain/CNS	86.50%	80.90%	80.90%	73.60%	73.60%
Hodgkin's Lymphoma	94.50%	94.50%	94.50%	94.50%	94.50%
Leukemia	96.50%	94.70%	92.70%	92.70%	90.40%
Soft Tissue, including Heart	100.00%	100.00%	100.00%	100.00%	100.00%
Testis	100.00%	100.00%	100.00%	100.00%	100.00%
Thyroid	100.0%	100.0%	100.0%	100.0%	85.90%

Top Incidence Sites by Age (Case count included only if more than 3 cases per cancer)

		<u>0-4</u>		<u>5-9</u>		<u>10-14</u>		<u>15-19</u>	
		Leukemia	5	Each site has less than 3 cases		Each site has less than 3 cases		Each site has less than 3 cases	
<u>20-24</u>		<u>25-29</u>		<u>30-34</u>		<u>35-39</u>		<u>40-44</u>	
Thyroid	4	Thyroid	6	Thyroid	9	Thyroid	12	Breast	21
		Testis	4	Melanoma	5	Breast	9	Thyroid	10
		Melanoma	3	Breast	4	Melanoma	4	Kidney	8
				NHL	4	NHL	4	Melanoma	8
				Testis	4	Oral Cavity	4	NHL	5
<u>45-49</u>		<u>50-54</u>		<u>55-59</u>		<u>60-64</u>		<u>65-69</u>	
Breast	22	Breast	28	Breast	45	Prostate	84	Prostate	117
Colorectal	13	Colorectal	23	Prostate	42	Breast	65	Breast	76
Melanoma	10	Melanoma	14	Colorectal	24	Lung	57	Lung	50
NHL	6	Prostate	14	Lung	19	Colorectal	34	Colorectal	38
Thyroid	6	Lung	13	Melanoma	19	Melanoma & Kidney	23	Bladder	34
<u>70-74</u>		<u>75-79</u>		<u>80-84</u>		<u>85+</u>			
Prostate	86	Prostate	68	Lung	24	Lung	31		
Lung	80	Lung	49	Bladder	21	Colorectal	24		
Breast	71	Colorectal	40	Breast	20	Bladder	21		
Colorectal	37	Breast	37	Prostate	20	Breast	21		
Melanoma	37	Bladder	31	Colorectal	18	Ill-Defined	16		

Top Mortality Sites by Age (Mortality count included only if 2 or more cases per cancer)

		0-4		5-9		10-14		15-19	
		Each site has less than 2 deaths		Each site has less than 2 deaths		Each site has less than 2 deaths		Each site has less than 2 deaths	
<u>20-24</u>		<u>25-29</u>		<u>30-34</u>		<u>35-39</u>		<u>40-44</u>	
Each site has less than 2 deaths		Each site has less than 2 deaths		Each site has less than 2 deaths		Leukemia	3	Each site has less than 2 deaths	
<u>45-49</u>		<u>50-54</u>		<u>55-59</u>		<u>60-64</u>		<u>65-69</u>	
Breast	3	Ill-Defined	6	Lung	11	Lung	29	Lung	32
Esophagus	2	Colorectal	5	Pancreas	11	Ill-Defined	12	Colorectal	14
Colorectal	2	Pancreas	5	Colorectal	9	Pancreas	9	Liver	10
		Breast, Cervix, Melanoma, & Ovary	3	Breast	6	Colorectal	8	Pancreas	9
				Ovary	5	Breast	7	Ill-Defined	9
<u>70-74</u>		<u>75-79</u>		<u>80-84</u>		<u>85+</u>			
Lung	48	Lung	42	Lung	28	Lung	34		
Ill-Defined	12	Pancreas	16	Colorectal	12	Ill-Defined	17		
Breast	11	Colorectal	13	Ill-Defined	12	Colorectal	16		
Pancreas	11	Prostate	13	Prostate	10	Prostate	16		
Colorectal	9	Ill-Defined	12	Breast & Pancreas	8	Bladder & Pancreas	11		

QUESTIONS?

**ME: (SOBBING MY HEART
OUT, EYES SWOLLEN, NOSE
RED) ... I CAN'T SEE YOU
ANymore ... I AM NOT
GOING TO LET YOU HURT ME
LIKE THIS AGAIN!**

**TRAINER: IT WAS A SIT UP.
YOU DID 1 SIT UP.**