

---

# CANCER IN WYOMING

Joseph Grandpre, PhD, MPH  
Wyoming Department of Health

# LEADING CAUSES OF DEATH IN WY

	<u>2018</u>	<u>2019</u>
Heart Disease	1,040	1,066
<b>Cancer</b>	<b>995</b>	<b>1,015</b>
Chronic Resp.	408	381
<i>Accidents/Adverse</i>	<i>349</i>	<i>384</i>
Alzheimer's	262	238
Stroke	217	221
<i>Suicide</i>	<i>148</i>	<i>170</i>
Diabetes	145	132
<b>Chronic Disease</b>	<b>61%</b>	<b>60%</b>

**I KILLED A BLACK SNAKE**

**WHY U NOT HAPPY**



## WY 2018 Cancer Incidence:

---

Prostate = 473

Breast = 411 (*406 Female, 5 Male*)

Lung = 275

Colorectal = 239

Melanoma = 180

**TOTAL = 2,790**

## WY 2017 Cancer Mortality:

---

Lung = 214

Colorectal = 89

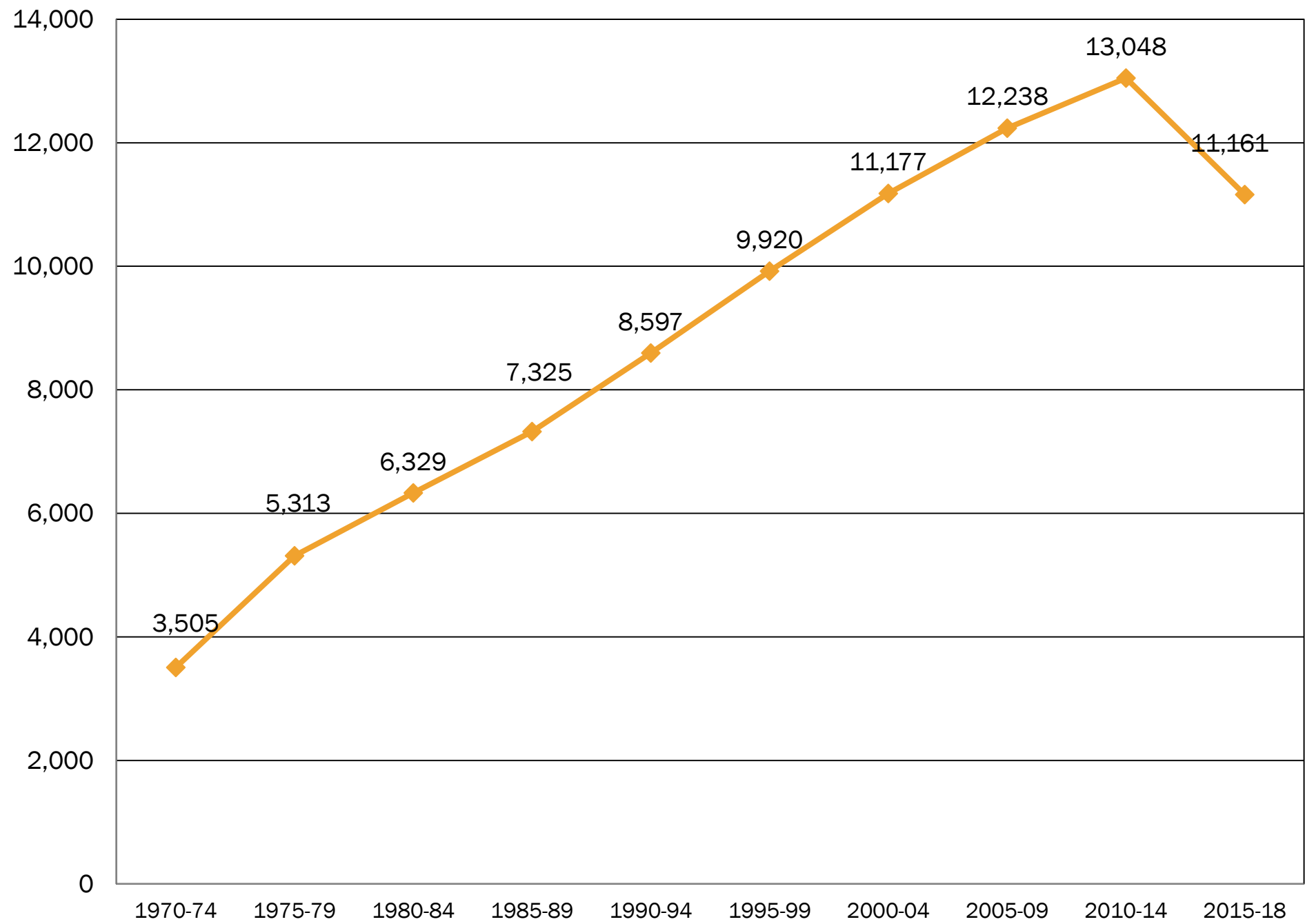
Pancreas = 77

Breast = 73

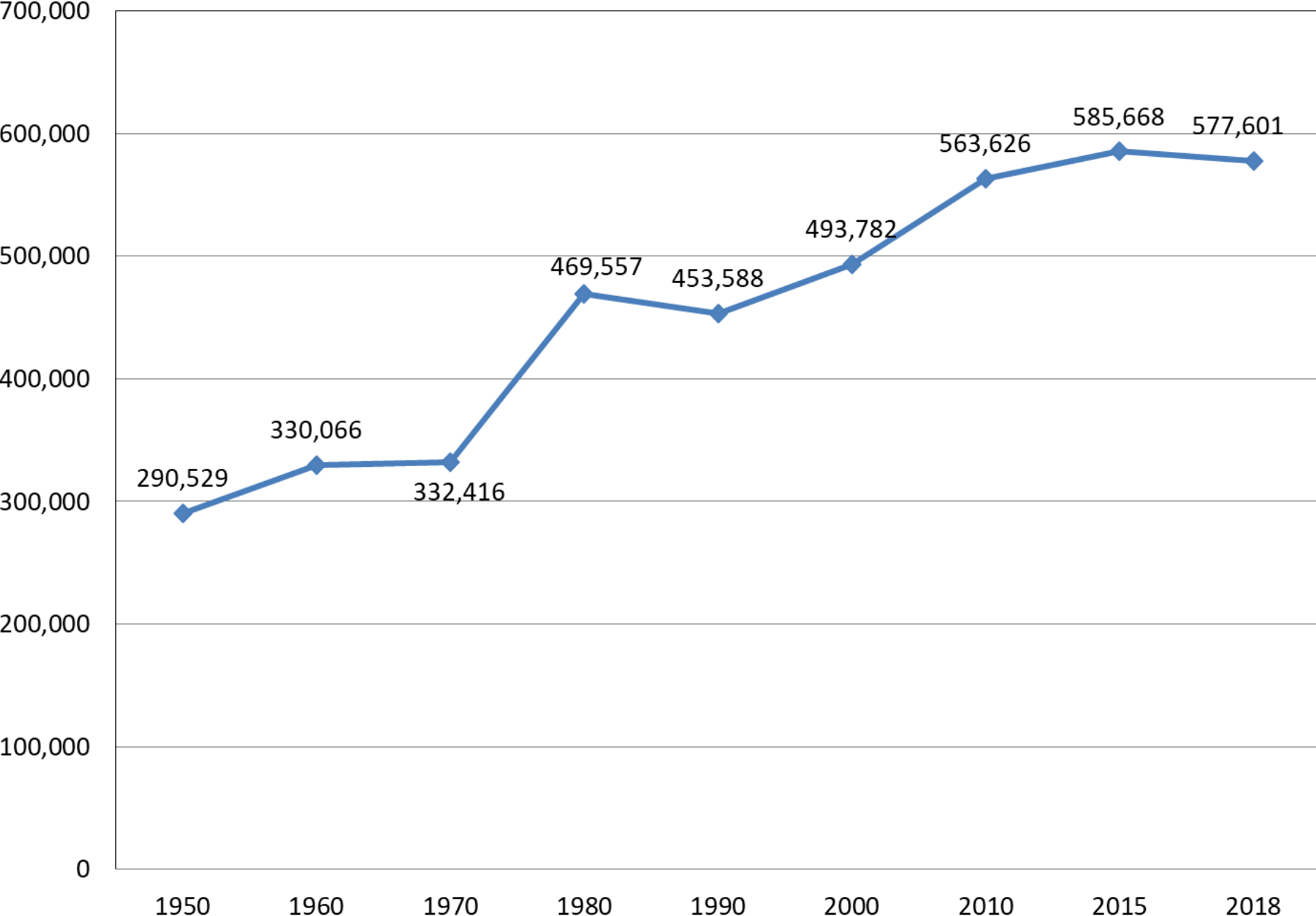
Prostate = 65

**TOTAL = 955**

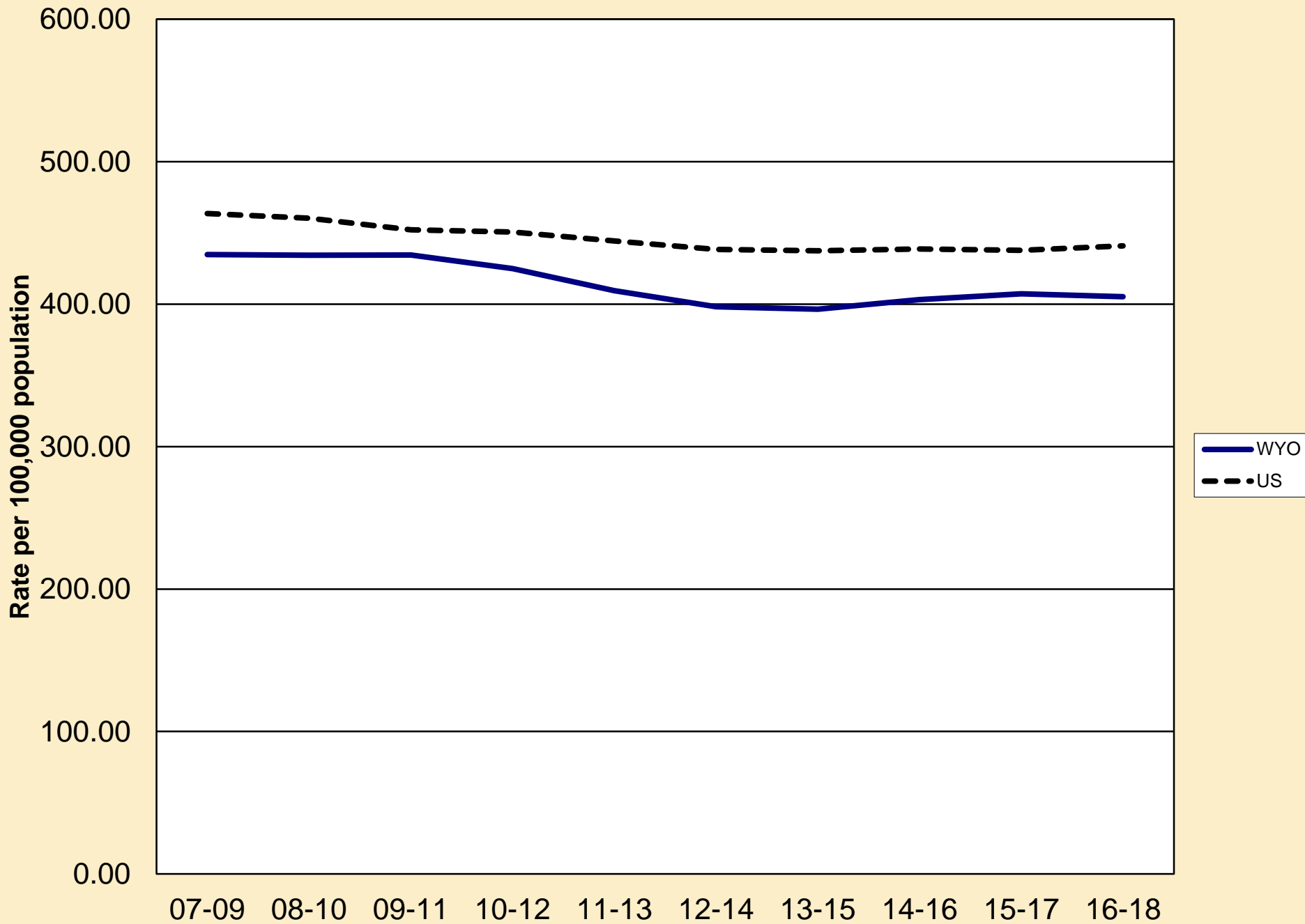
# INCIDENCE - ALL CANCER SITES - 5 YEAR GROUPS



# WY POPULATION

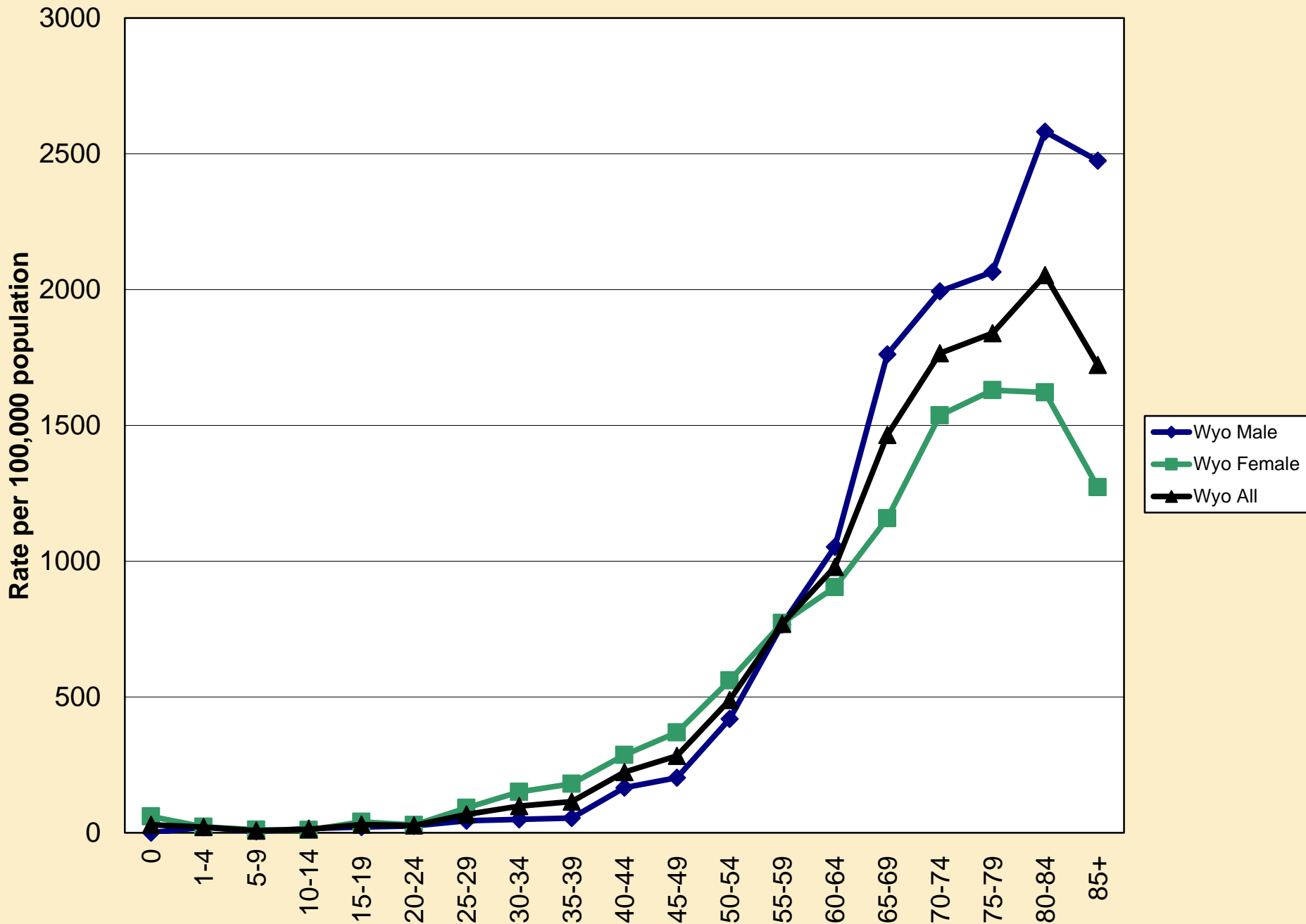


# CANCER INCIDENCE - ALL SITES

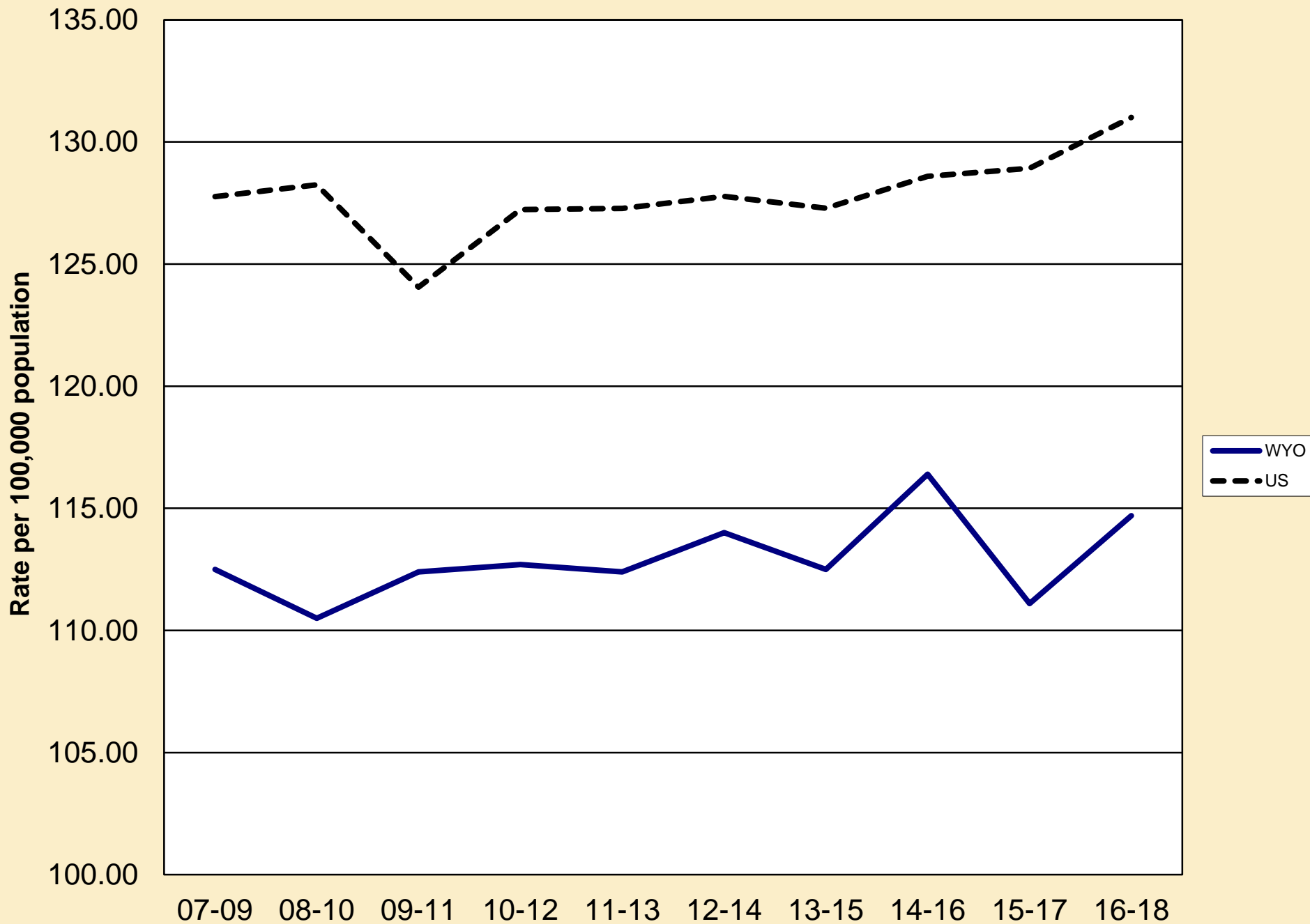




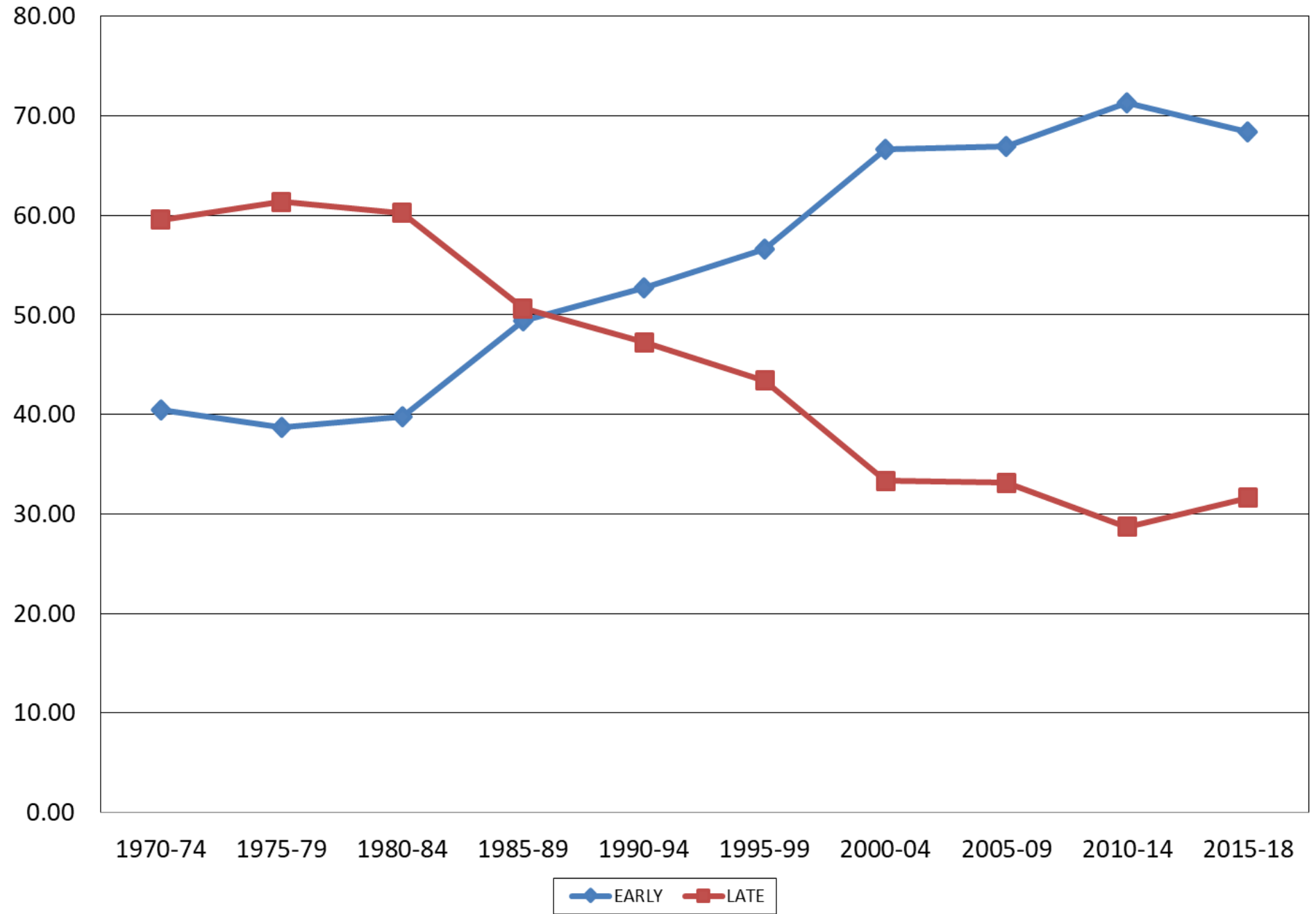
# CANCER INCIDENCE - ALL SITES



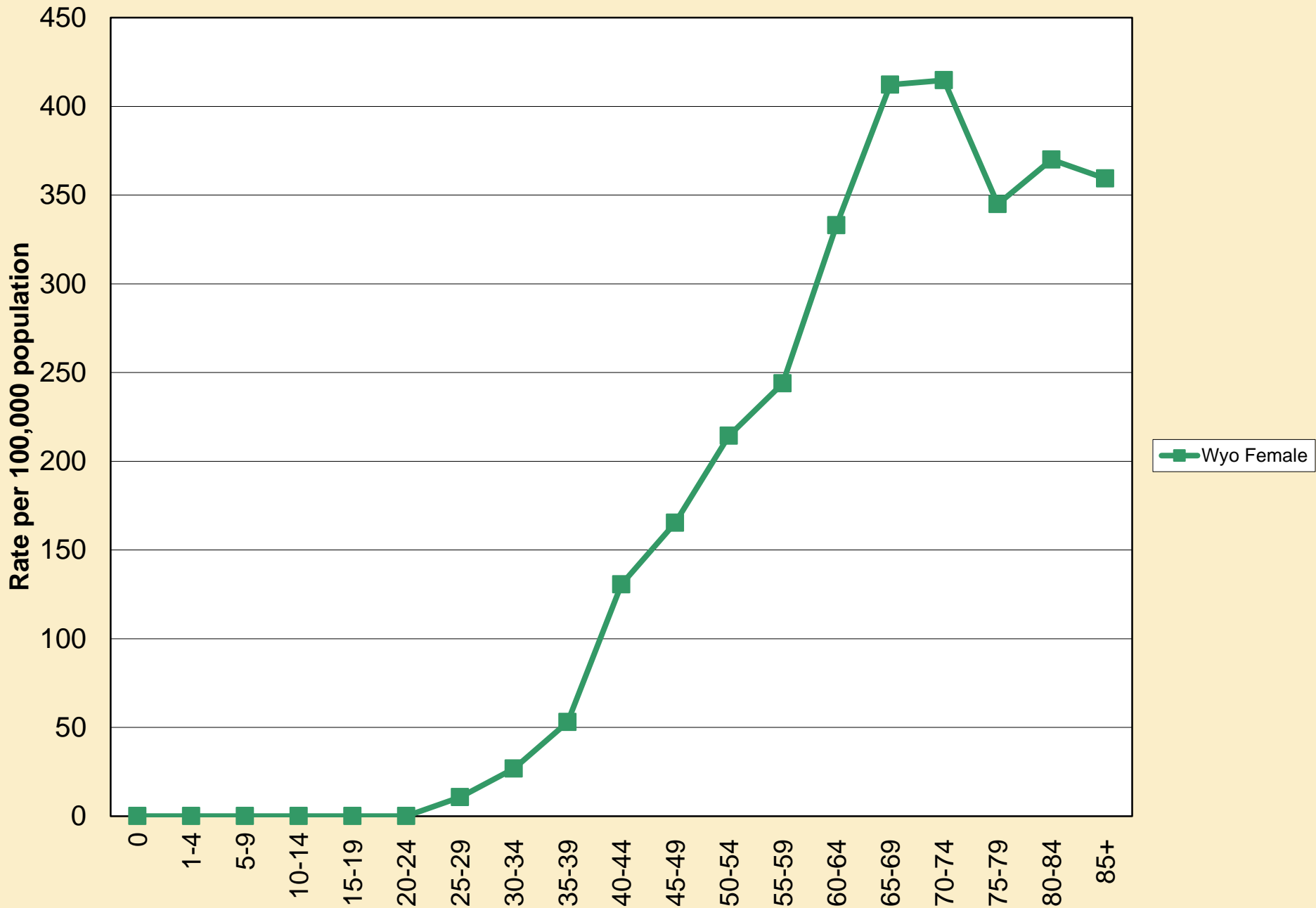
# CANCER INCIDENCE - FEMALE BREAST



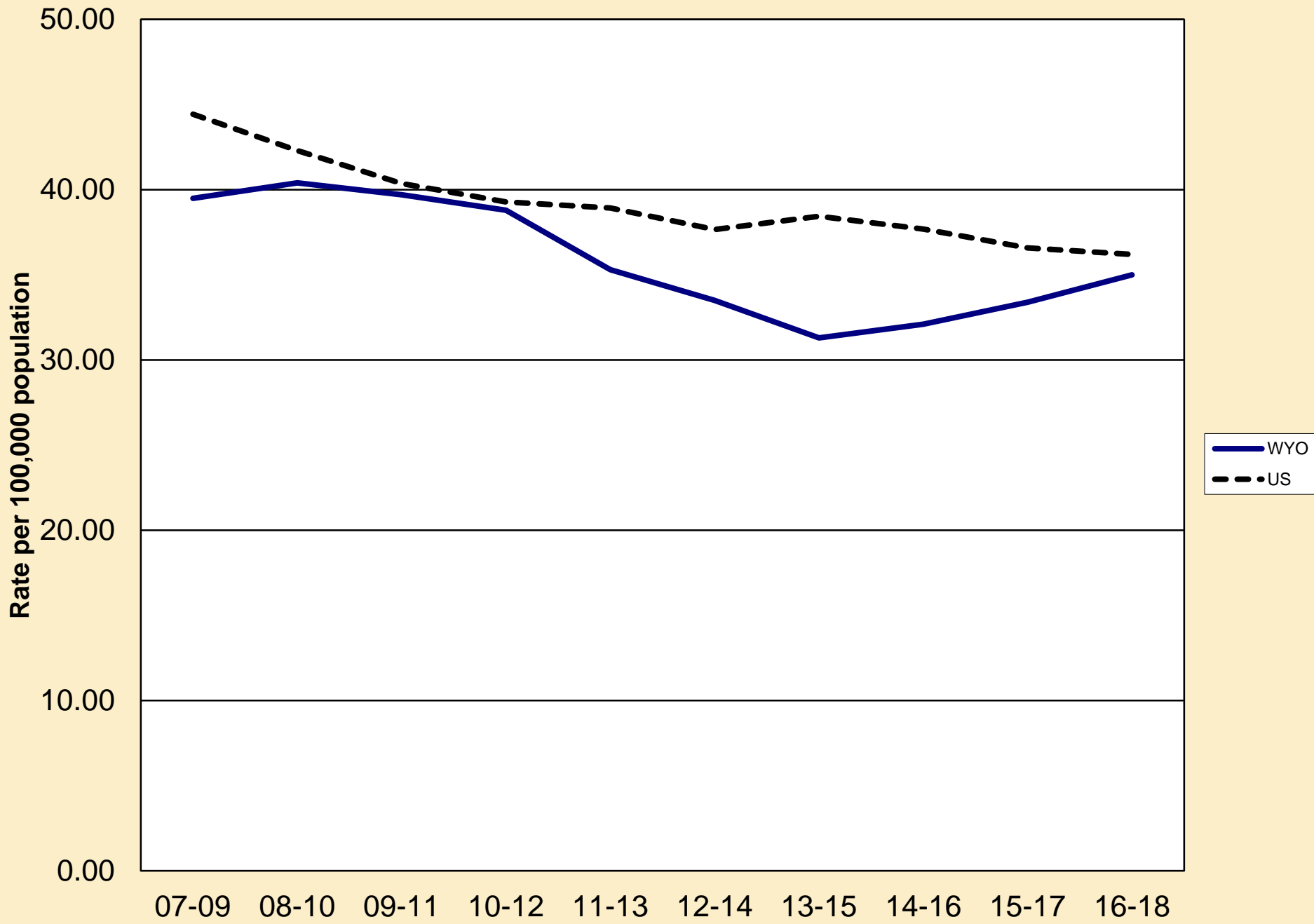
# FEMALE BREAST CANCER



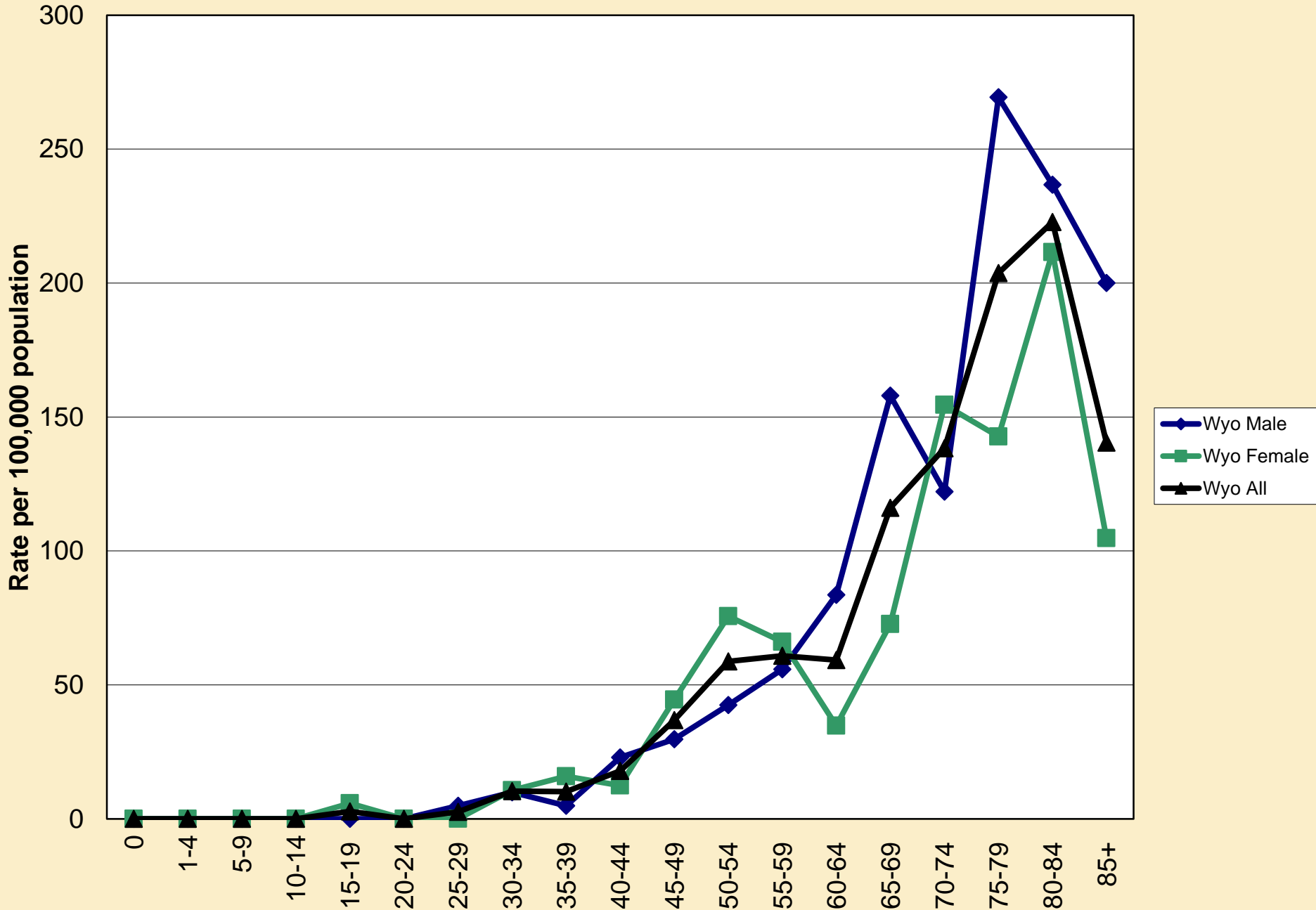
# CANCER INCIDENCE - FEMALE BREAST



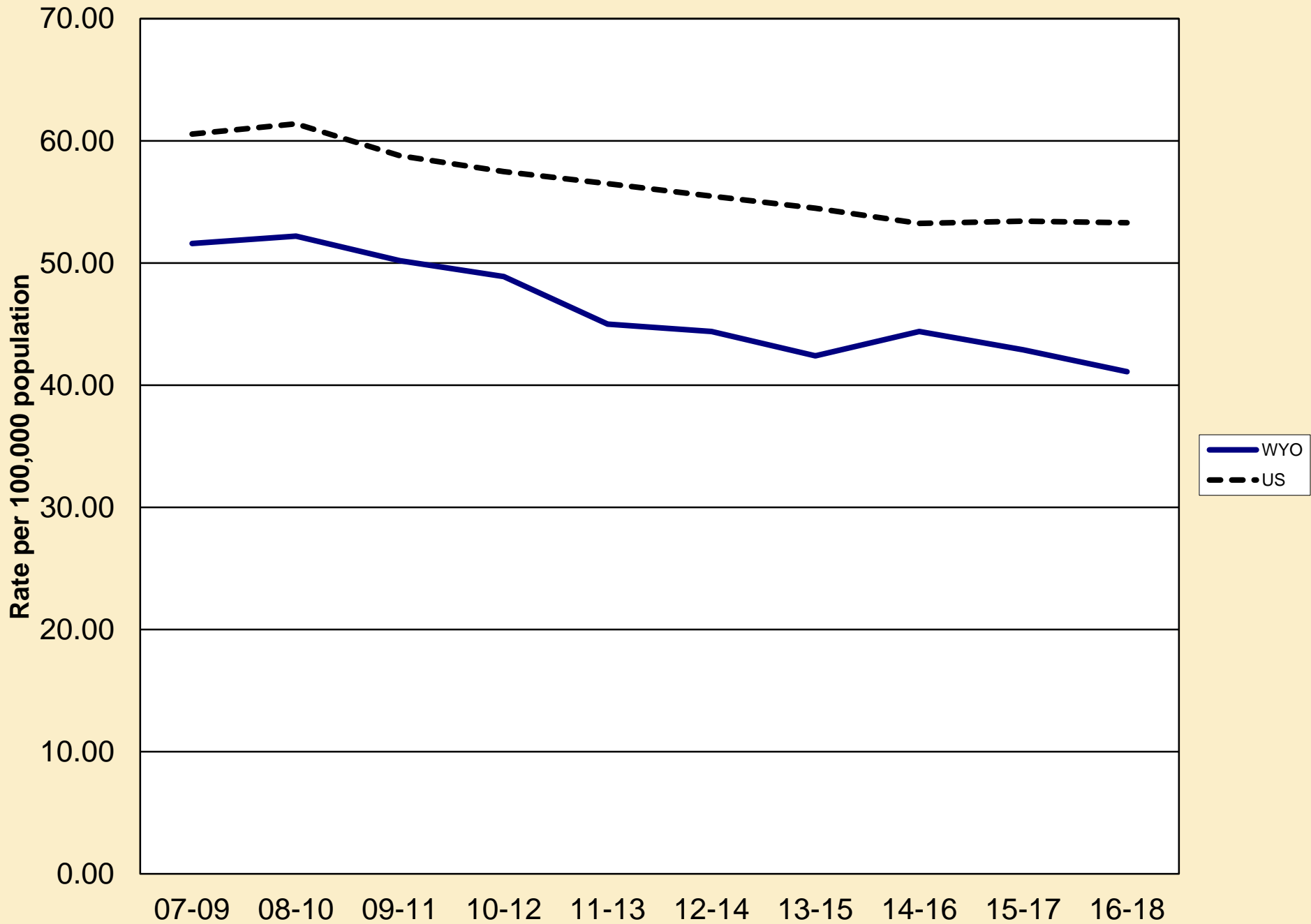
# CANCER INCIDENCE - COLORECTAL



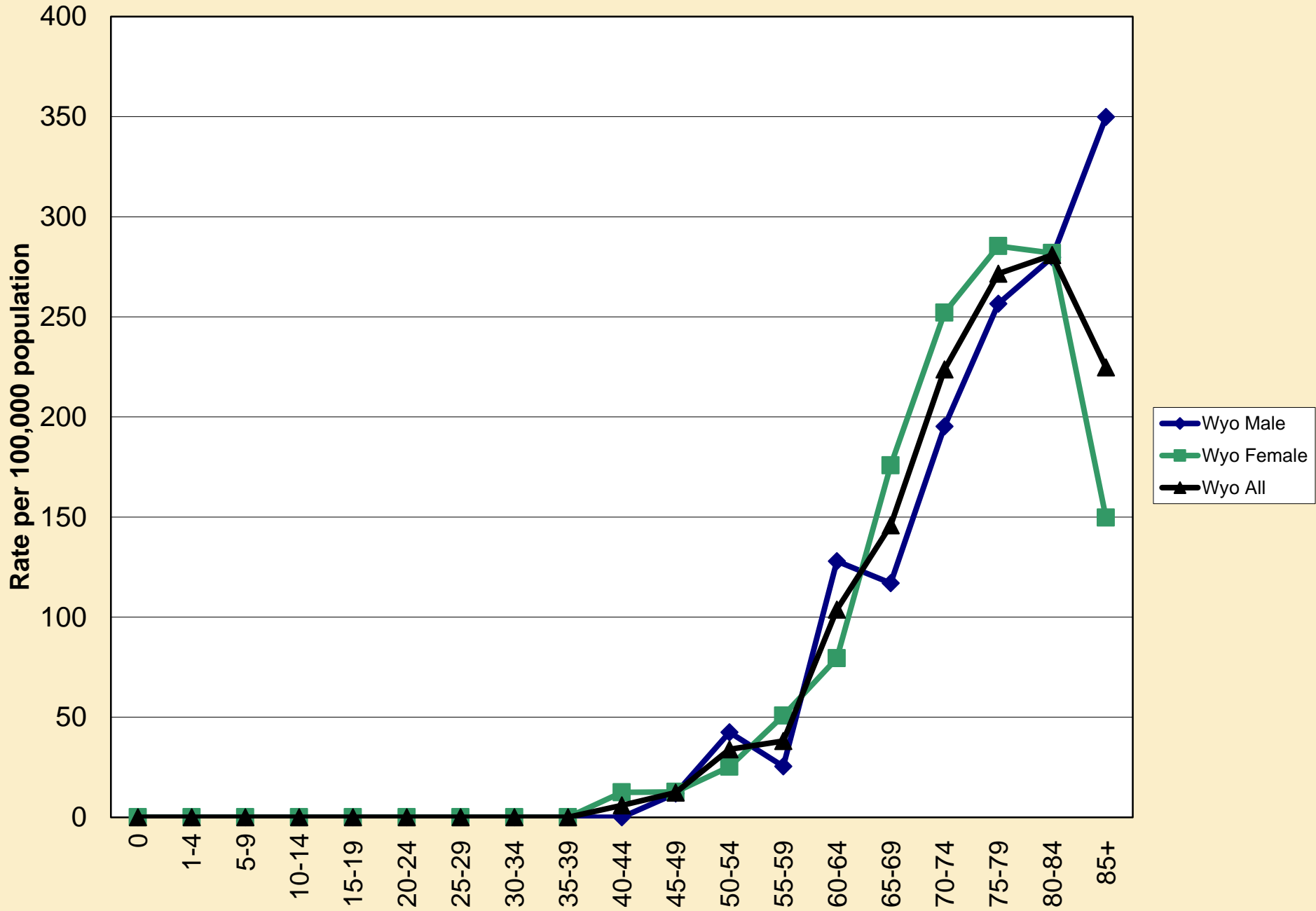
# CANCER INCIDENCE - COLORECTAL



# CANCER INCIDENCE - LUNG

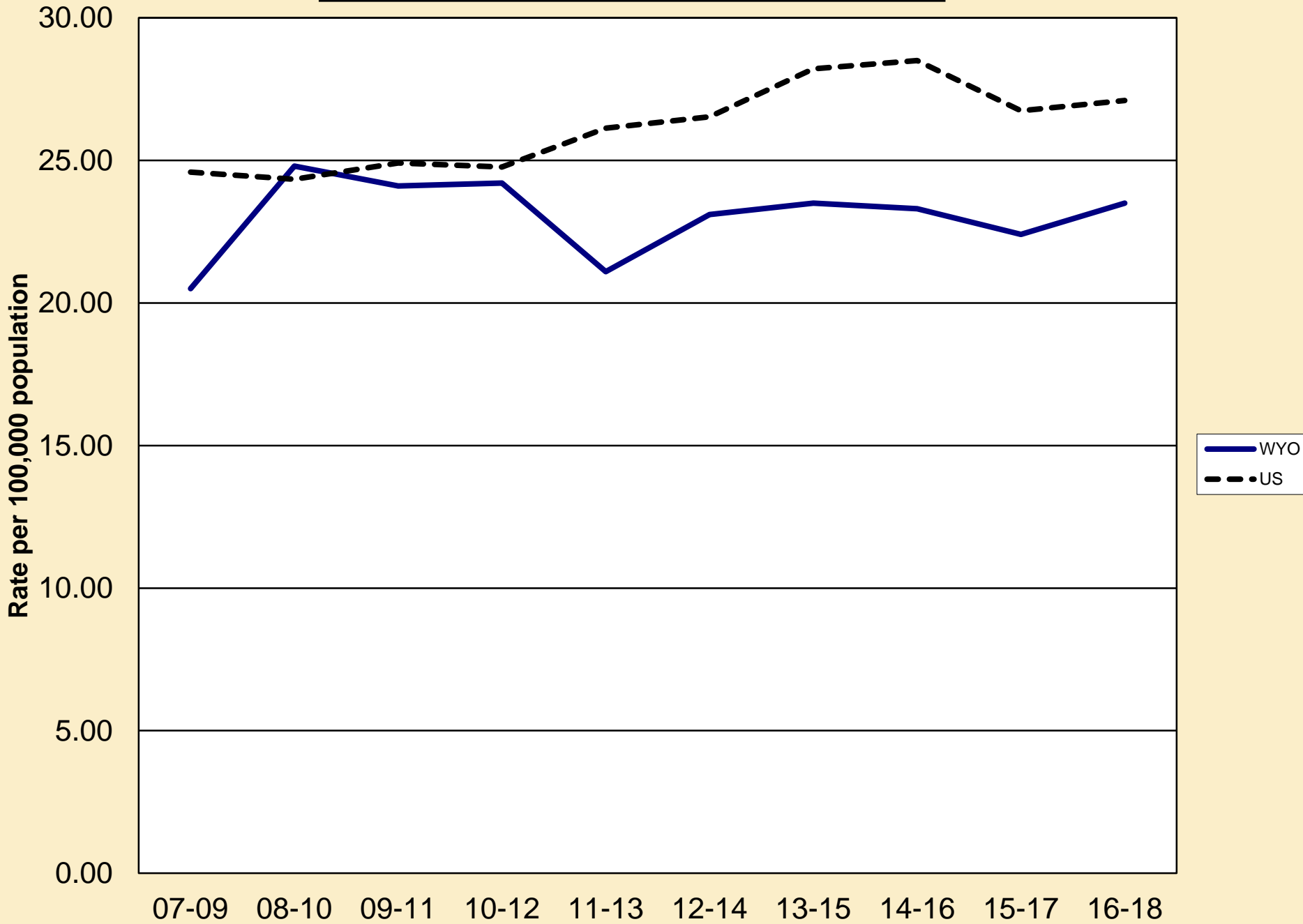


# CANCER INCIDENCE - LUNG

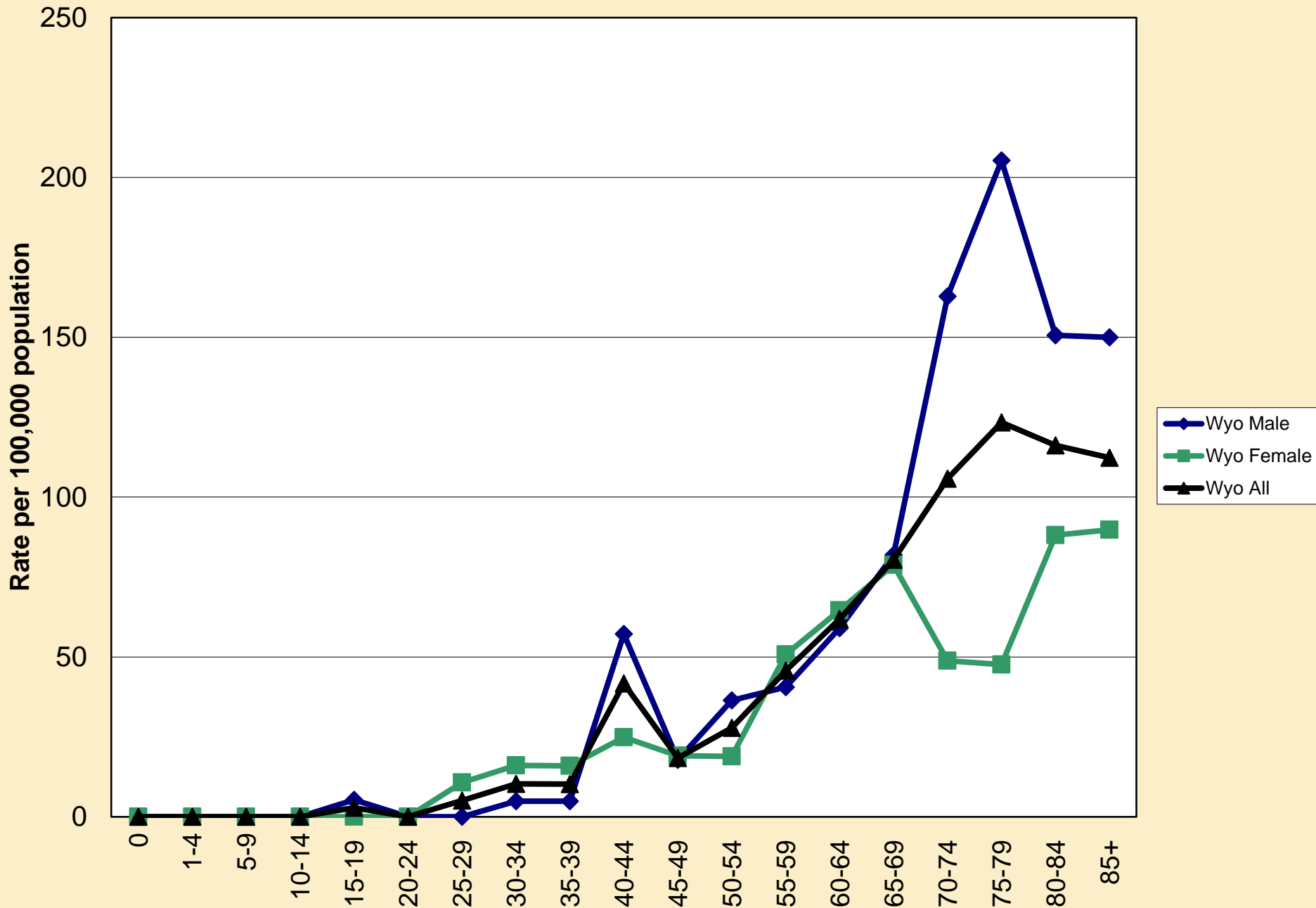




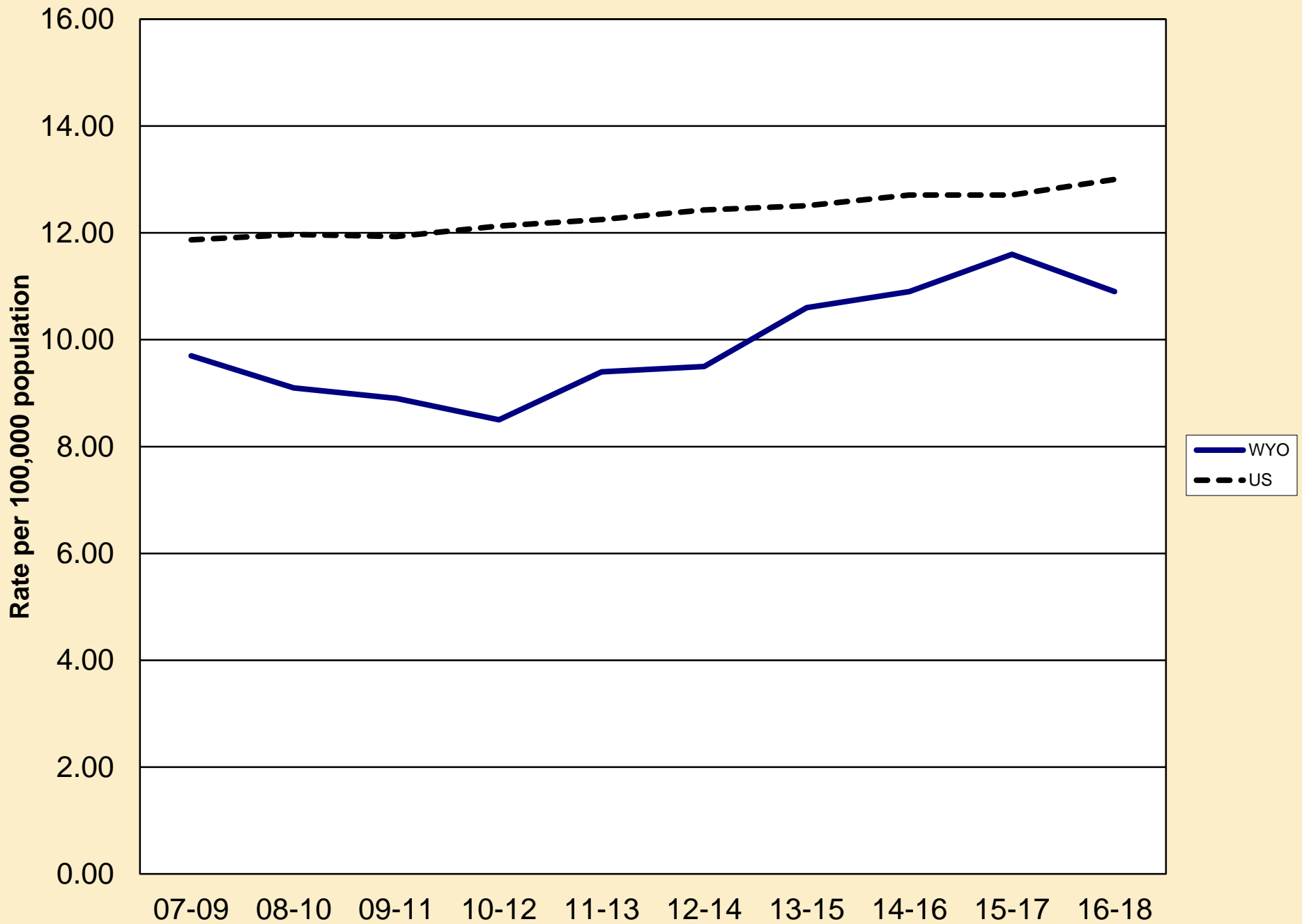
# CANCER INCIDENCE - MELANOMA



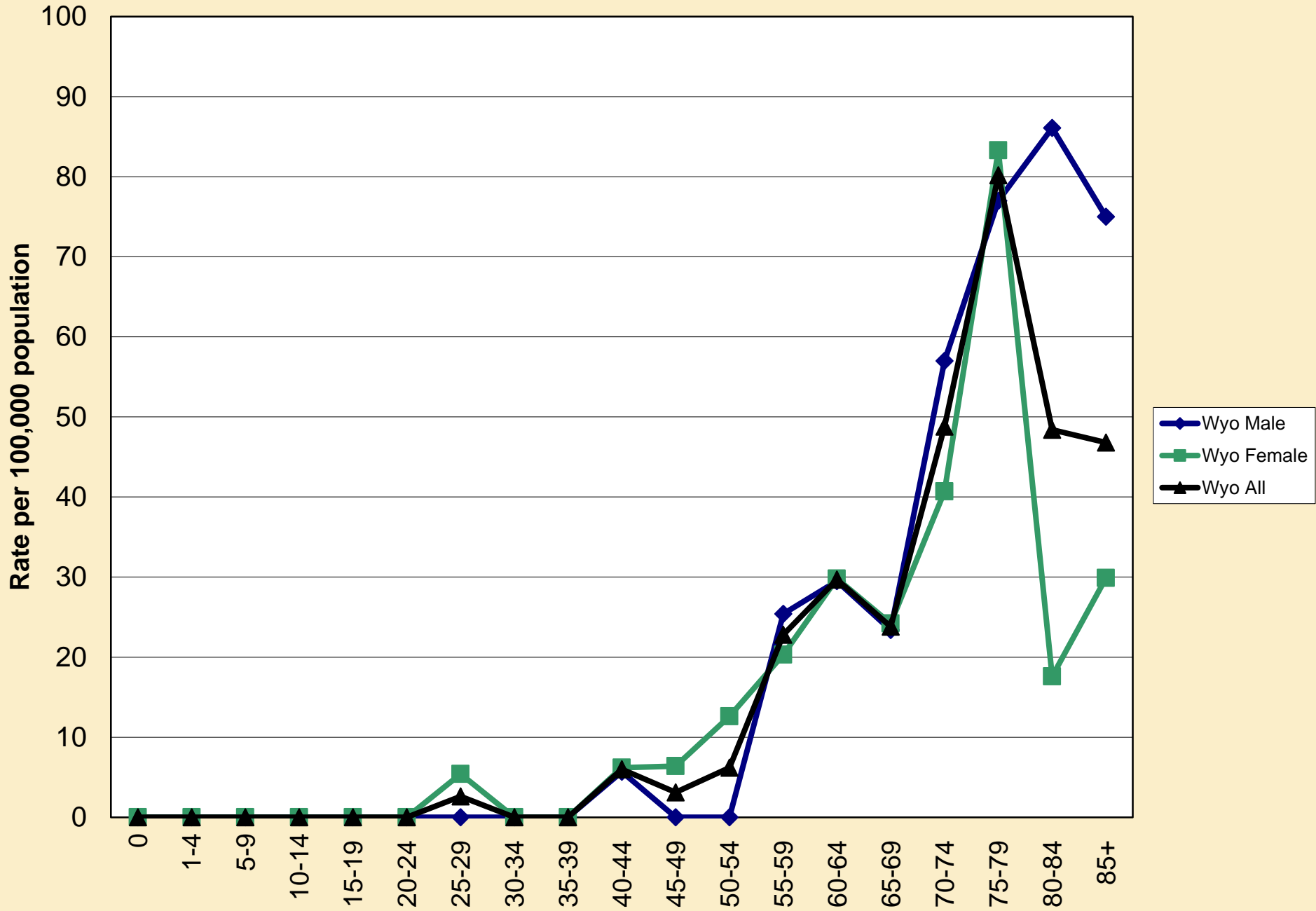
# CANCER INCIDENCE - MELANOMA



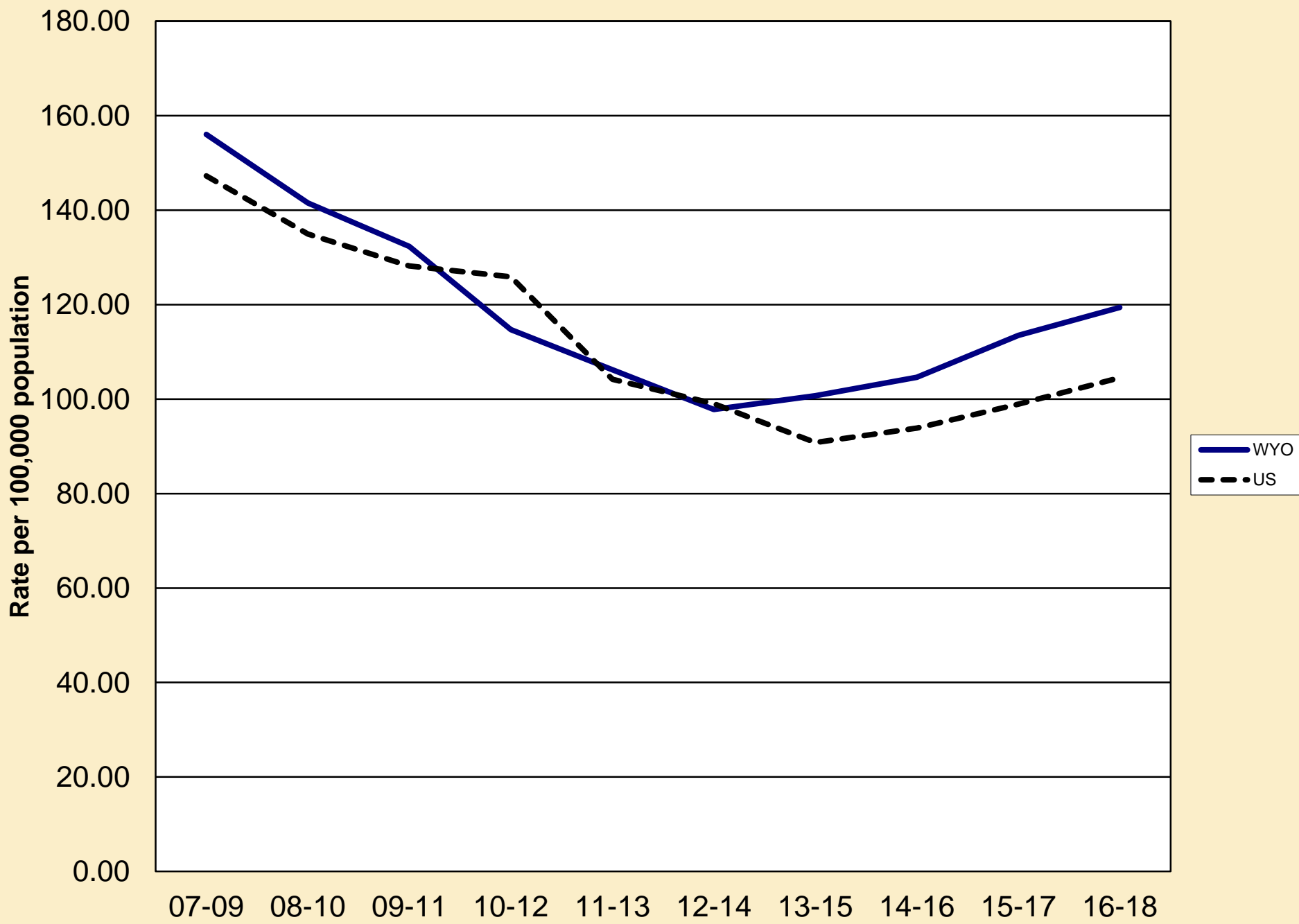
# CANCER INCIDENCE - PANCREAS



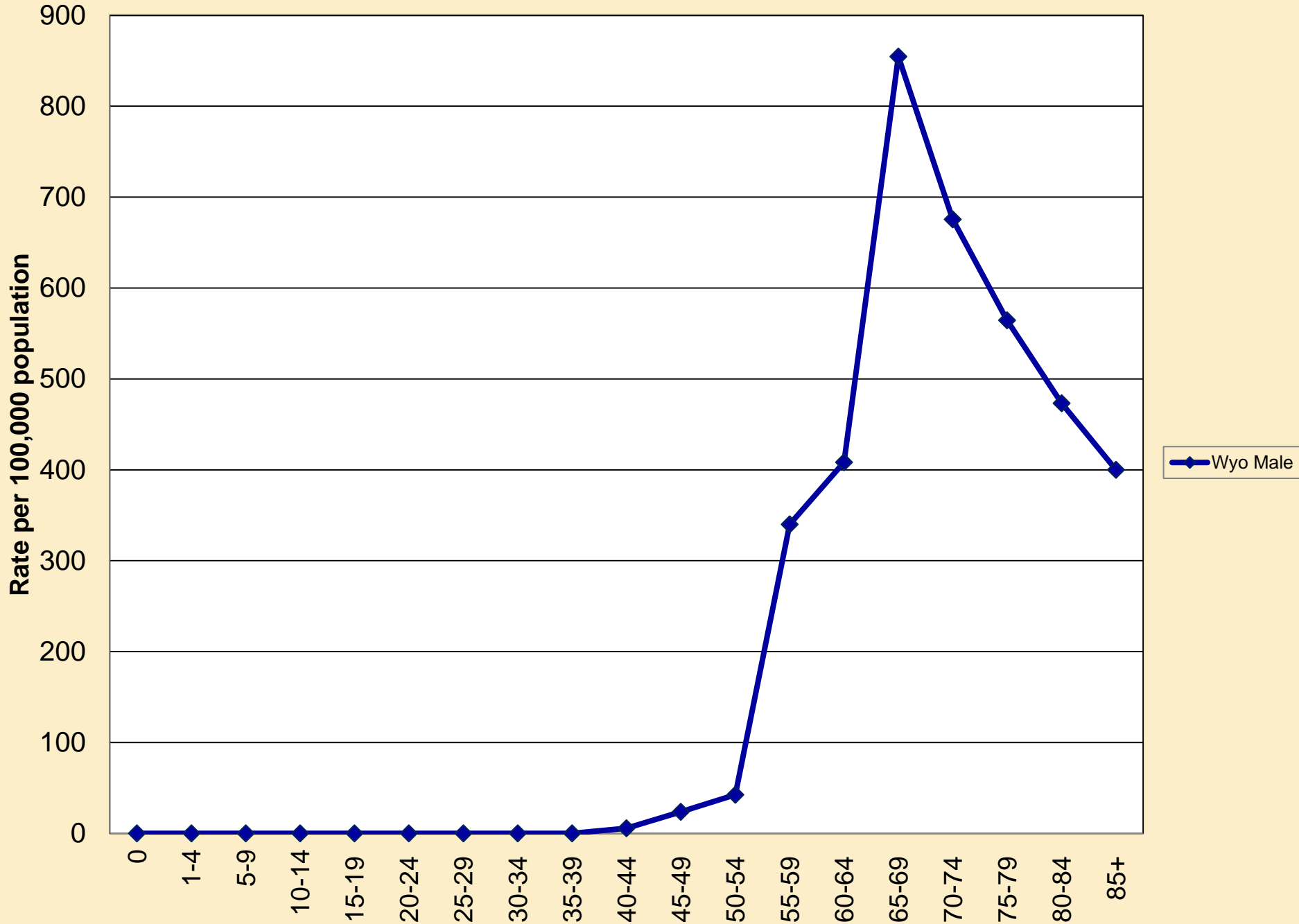
# CANCER INCIDENCE - PANCREAS



# CANCER INCIDENCE - PROSTATE



# CANCER INCIDENCE - PROSTATE



# Top Incidence Sites by Age (Case count included only if more than 3 cases per cancer)

		<u>0-4</u>		<u>5-9</u>		<u>10-14</u>		<u>15-19</u>	
		Each site has less than 3 cases		Each site has less than 3 cases		Each site has less than 3 cases		Testis	4
<u>20-24</u>		<u>25-29</u>		<u>30-34</u>		<u>35-39</u>		<u>40-44</u>	
Soft Tissue/ W Heart	3	Thyroid	6	Thyroid	10	Breast	7	Breast	16
		Testis	3	Breast	9	Melanoma	6	Thyroid	14
				Melanoma	5	Cervix	5	Kidney	6
						Testis	5		
<u>45-49</u>		<u>50-54</u>		<u>55-59</u>		<u>60-64</u>		<u>65-69</u>	
Breast	30	Breast	30	Prostate	59	Prostate	90	Prostate	109
Colorectal	6	Prostate	23	Breast	45	Breast	52	Lung	53
Melanoma	8	Colorectal	15	Colorectal	25	Lung	36	Breast	44
Leukemia	6	Lung	11	Lung	21	Colorectal	26	Colorectal	38
		Melanoma	11	Uterine	16	Melanoma	24	Melanoma	29
<u>70-74</u>		<u>75-79</u>		<u>80-84</u>		<u>85+</u>			
Prostate	114	Lung	57	Lung	34	Breast	29		
Lung	49	Prostate	44	Colorectal	22	Non-Hodgkin	29		
Breast	46	Breast	33	Breast	18	Bladder	22		
Bladder	32	Colorectal	33	Prostate	18	Colorectal	18		
Colorectal	28	Bladder	23			Lung	14		

# Top Mortality Sites by Age (Mortality count included only if 2 or more cases per cancer)

		<u>0-4</u>		<u>5-9</u>		<u>10-14</u>		<u>15-19</u>	
		Each site has less than 2 deaths		Each site has less than 2 deaths		Each site has less than 2 deaths		Each site has less than 2 deaths	
<u>20-24</u>		<u>25-29</u>		<u>30-34</u>		<u>35-39</u>		<u>40-44</u>	
Each site has less than 2 deaths		Each site has less than 2 deaths		Each site has less than 2 deaths		Colorectal	3	Brain/CNS	2
						Lung	3	Other Biliary	2
<u>45-49</u>		<u>50-54</u>		<u>55-59</u>		<u>60-64</u>		<u>65-69</u>	
Breast	3	Brain/CNS	4	Lung	18	Lung	27	Lung	29
III-Defined	3	Kidney	4	III-Defined	7	Pancreas	11	III-Defined	13
Melanoma	3	Lung	4	Pancreas	7	III-Defined	9	Pancreas	12
Pancreas	3	Pancreas	4	Breast	5	Liver	9	Colorectal	10
				Colorectal	5	Brain & Esophagus	8		
<u>70-74</u>		<u>75-79</u>		<u>80-84</u>		<u>85+</u>			
Lung	43	Lung	34	Lung	24	Lung	29		
Colorectal	11	III-Defined	15	III-Defined	14	Colorectal	16		
Pancreas	10	Brain/CNS	10	Colorectal	11	III-Defined	16		
Breast	9	Breast	9	Breast	8	Prostate	13		
III-Defined	8	Pancreas & Prostate	8	Pancreas	8	Pancreas	10		



## Relative Survival by Cancer Type: 2010-2018 (All Ages Combined)

<b>Cancer Site</b>	12 Months	24 Months	36 Months	48 Months	60 Months
All Sites	83.90%	78.60%	75.90%	73.50%	<b>72.30%</b>
Bladder w/in situ	92.00%	87.10%	85.50%	84.50%	<b>84.40%</b>
Brain/CNS	57.80%	42.80%	37.90%	32.40%	<b>30.30%</b>
Breast (Female)	98.10%	97.10%	95.30%	94.20%	<b>92.80%</b>
Colorectal	84.60%	77.20%	73.20%	68.30%	<b>65.00%</b>
Kidney	89.30%	85.10%	83.50%	79.50%	<b>78.00%</b>
Leukemia	79.90%	73.60%	70.50%	66.50%	<b>64.60%</b>
Lung	47.70%	33.00%	27.40%	23.20%	<b>21.20%</b>
Melanoma	99.50%	98.30%	98.30%	97.70%	<b>97.30%</b>
Non-Hodgkin	84.30%	80.30%	78.50%	75.20%	<b>74.30%</b>
Oral Cavity	91.00%	83.70%	78.20%	74.30%	<b>72.00%</b>
Ovary	83.80%	71.20%	64.60%	57.40%	<b>49.70%</b>
Pancreas	31.80%	19.00%	15.70%	13.20%	<b>13.20%</b>
Prostate	99.60%	99.60%	98.90%	98.30%	<b>98.30%</b>
Thyroid	98.20%	98.00%	97.40%	97.40%	<b>97.40%</b>
Uterine	96.30%	92.60%	89.70%	87.90%	<b>87.10%</b>

## Relative Survival by Cancer Type: 2010-2018 All Stages (Ages 0-19 years old)

<b>Cancer Site</b>	12 Months	24 Months	36 Months	48 Months	<b>60 Months</b>
All Sites	96.40%	94.10%	93.40%	90.50%	<b>89.30%</b>
Brain/CNS	85.90%	78.60%	78.60%	67.30%	<b>67.30%</b>
Hodgkin Lymphoma	90.90%	90.90%	90.90%	90.90%	<b>90.90%</b>
Leukemia	97.70%	95.40%	92.70%	92.70%	<b>92.70%</b>
Soft Tissue, including Heart	100.00%	100.00%	100.00%	100.00%	<b>100.00%</b>
Testis	100.00%	100.00%	100.00%	100.00%	<b>100.00%</b>
Thyroid	100.00%	100.00%	100.00%	100.00%	<b>75.10%</b>

# QUESTIONS?