

---

# Wyoming Cancer Plan

Childhood Cancer Workgroup

September 30, 2020

# Today's Objectives

- Build common understanding of current plan progress to date
- Select key goals/topics
- Identify priority strategies for each goal

# Today's Agenda

- Data updates
- Topics and goals for the future
- Progress on strategies
- Strategies for the future

# Project Overview

- **Goal:** Write and design updated statewide cancer plan for 2021 to 2025 by January 31, 2021
  - Align with other statewide plans
  - Relevant to all key stakeholders
  - Across the cancer continuum
  - Measurable objectives
  - Matches need and addresses disparities

# What is the cancer plan?

- Statewide cancer plan
- Implemented by the coalition

# What is the cancer plan?

- **Goal:** Measurable, time-bound goal
- **Strategy:** Action oriented activity to positively impact the topic area of focus and make progress on the goal

# Framing

- Gather different perspectives
- Consider disparities
- Next 5 years

# What we heard from the coalition

- Focused
- Measurable
- Actionable
- Messaging/Communication
  - To clinicians, stakeholder organizations, and the general population



# Plan Overview

- Prevention
- Screening & Early Detection
- Survivorship
- Childhood Cancer

# Plan Overview

- Prevention
- Screening & Early Detection
- Survivorship
- **Childhood Cancer**

# Definition

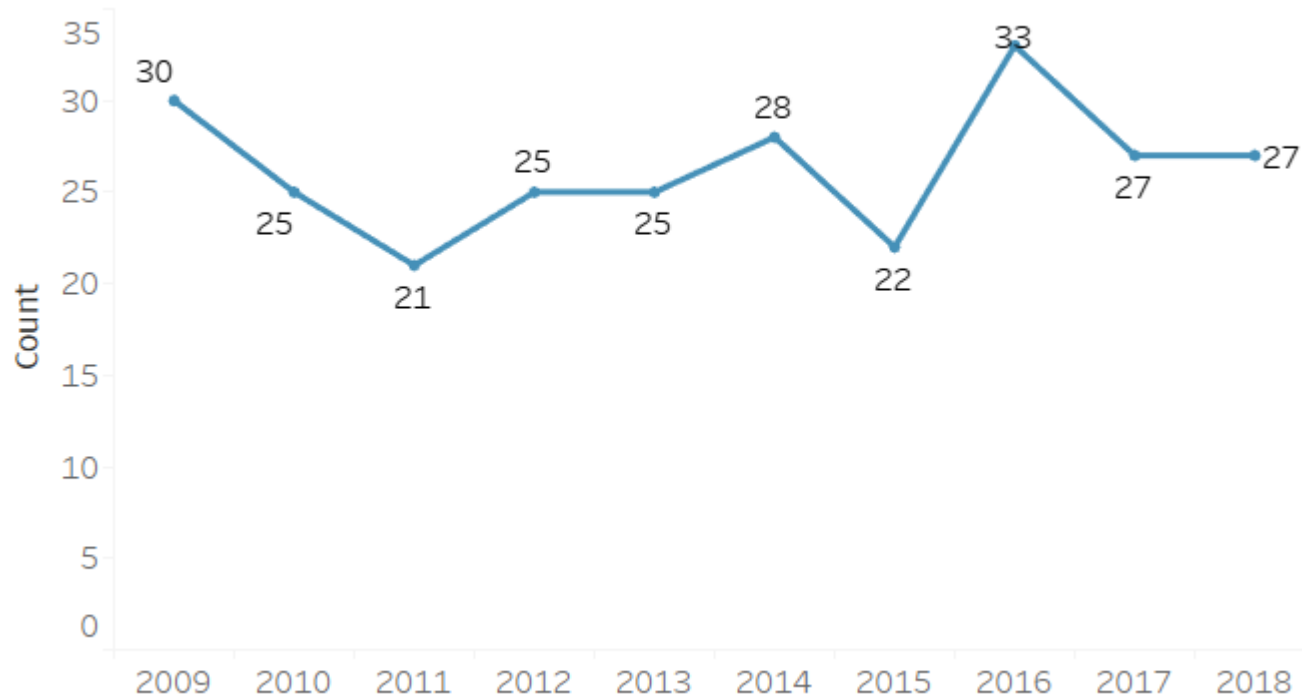
- **Childhood Cancer**
  - Defined as cancers that occur between birth and 15 years of age
  - Aligned with Survivorship

# Current Plan Overview

- **Childhood Cancer**
  - Contact Database of Families
  - Expand medical and mental health services available
  - Resources on long term survivorship
  - Resources on end-of-life care

# Data | Childhood Cancers

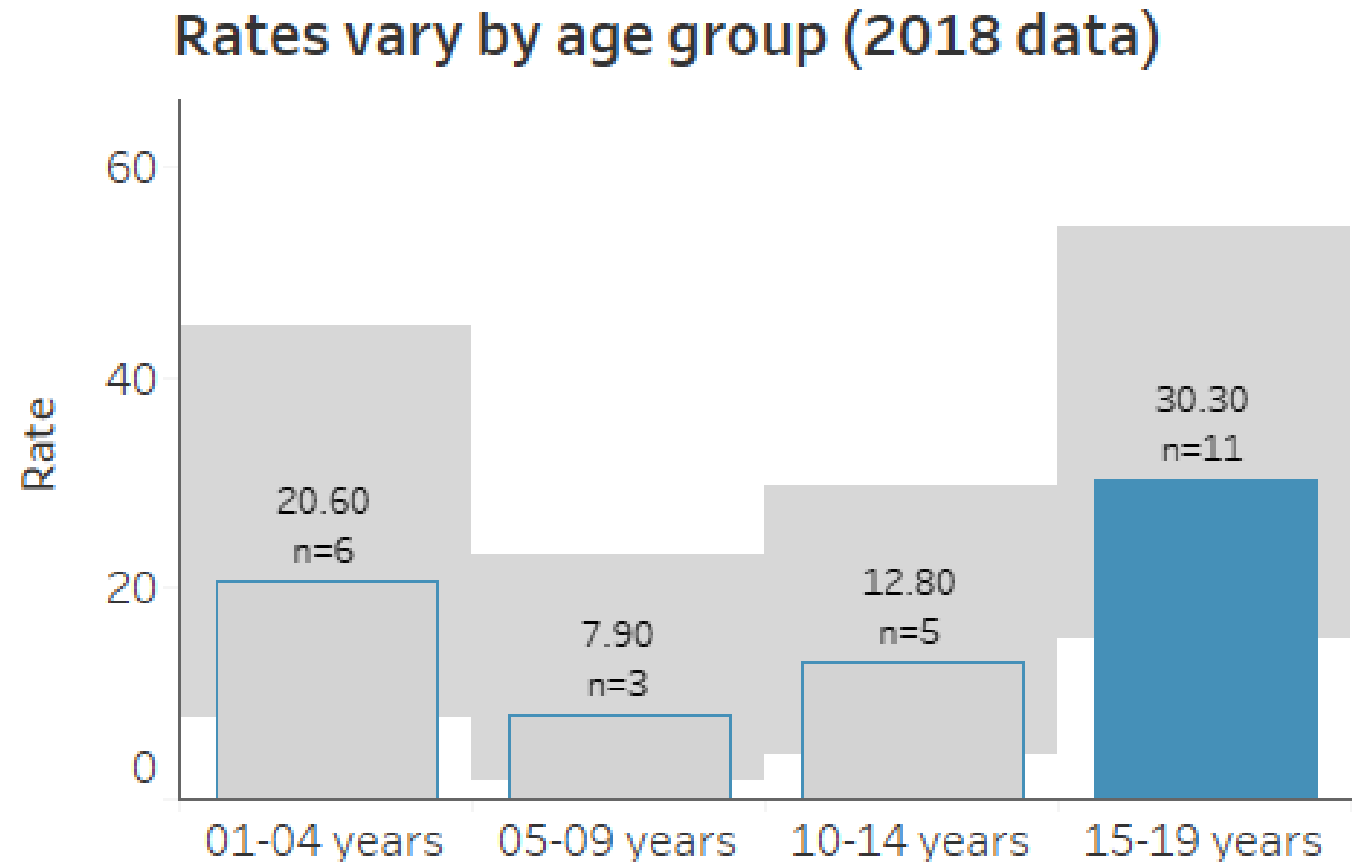
Number of childhood cancer cases diagnosed per year



- Average= **26 cases**/year between age 0-19.
- **Leukemia** and **brain cancers** are most common

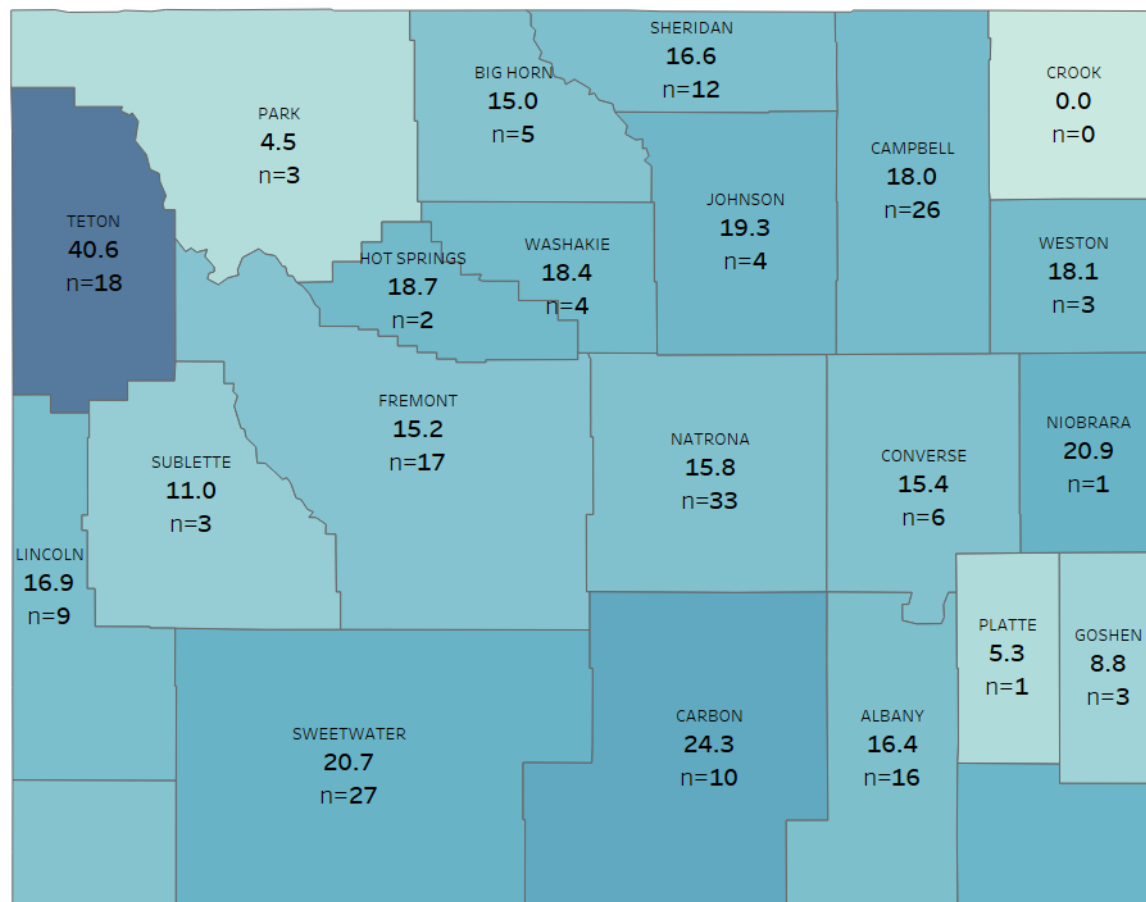
# Data | Childhood Cancers

- The highest number of cases were diagnosed in adolescents (**age 15-19**)
- *Age 0 excluded here for low numbers*



# Data | Childhood Cancers

Childhood Cancer cases diagnosed in the past 10 years (2009-2018) by county



Many of the kids diagnosed in Wyoming are in the **northwest region**

# Goals | Childhood Cancers

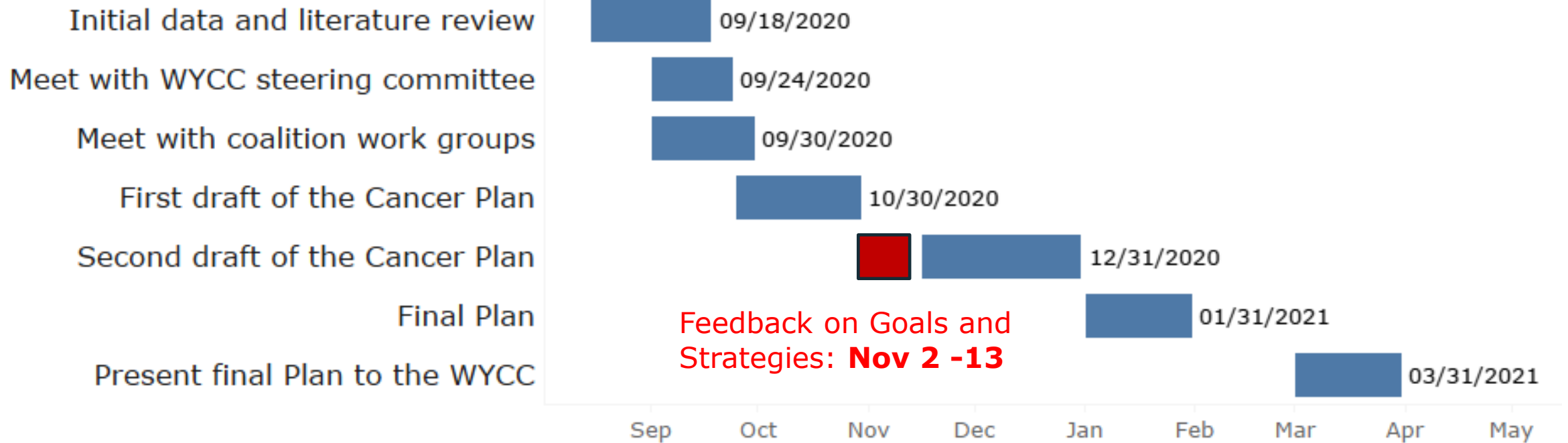
Topic	Current	Rec'	Future
5.1	Update and maintain the contact database of families affected by pediatric cancer in Wyoming to serve as a hub for <b>networking and information sharing</b> .		
5.2	<b>Expand</b> medical and mental <b>health services</b> available for children with cancer in Wyoming.		
5.3	Increase the number of resources that promote awareness of the issues related to <b>long-term survivorship and education</b> .		
5.4	Increase resources and education available related to appropriate <b>end-of-life care</b> for childhood cancer patients.		



# Strategies | Childhood Cancer

- See discussion notes

# Project Timeline & Next Steps



# Thank you!

Questions?

Megan Mackey

[megan.mackey@onehealthinsights.com](mailto:megan.mackey@onehealthinsights.com)

